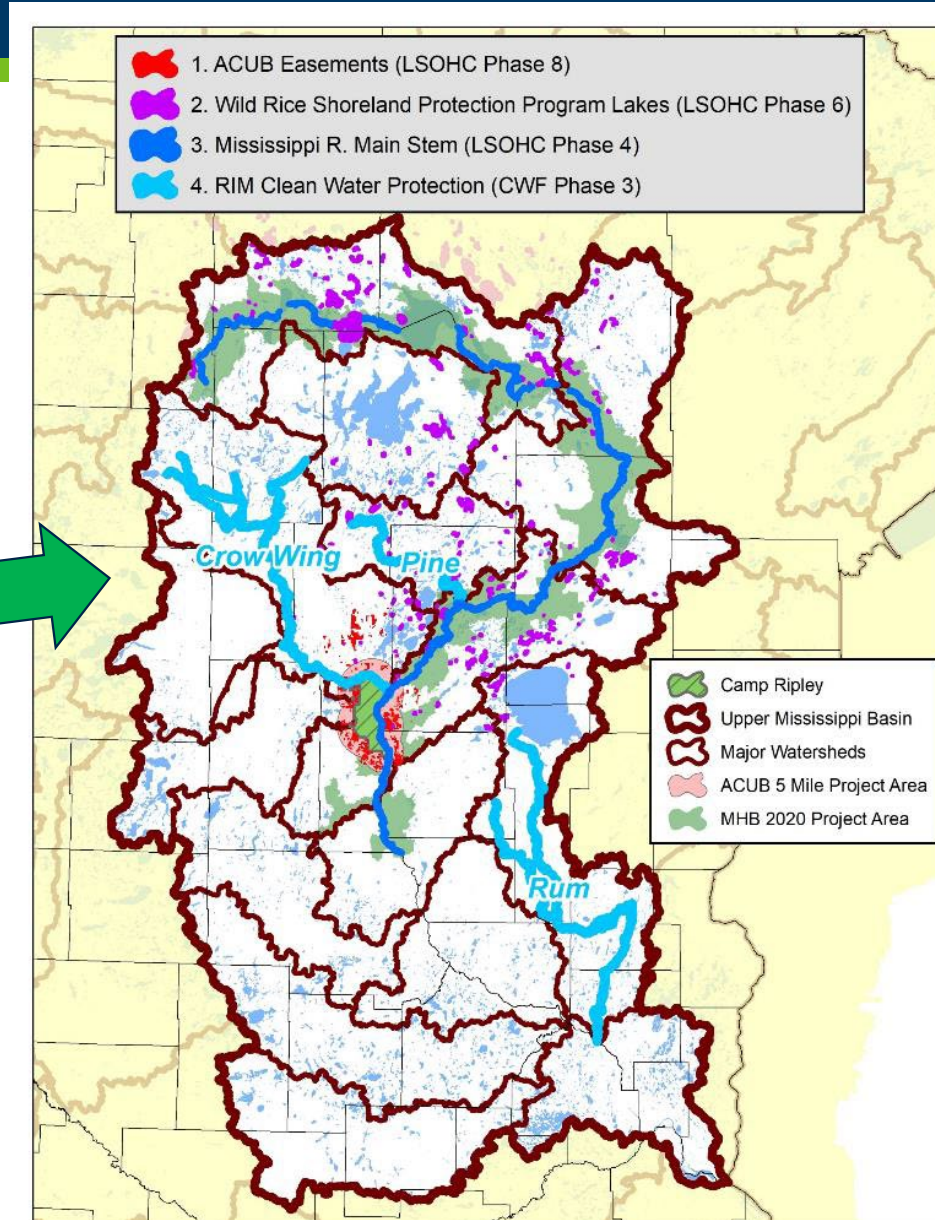
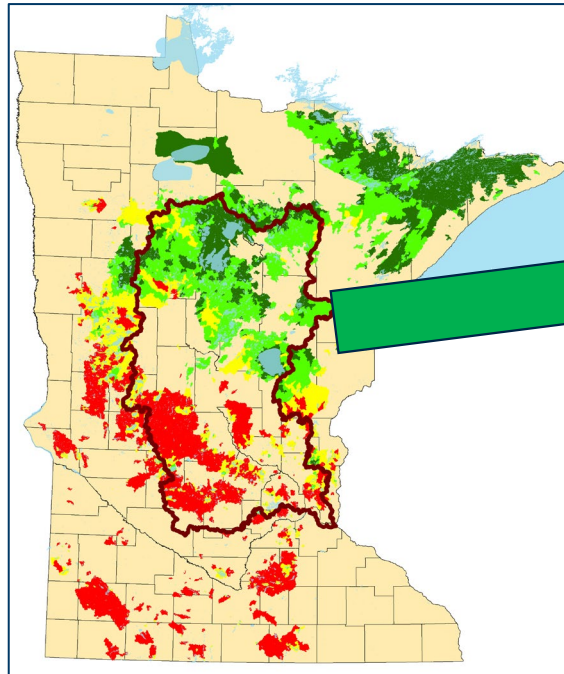




Upper Mississippi River Basin Report & Priority Lakes Protection Project

Legislative Subcommittee on Water Policy
July 21, 2022

Forestland Protection Projects (2005 – present)



Accomplishments so far...

Forestland Protection Projects

1. ACUB Project:
\$60 M – Fed + LSOHC
2. Wild Rice Project:
\$9 M – LSOHC
3. Mississippi River Corridor:
\$16+ M – LSOHC
4. RIM Clean Water Projects:
\$9 M – CWC
5. Leech / Pine Watershed
\$4 M - LSOHC

Over 90,000 acres protected!

What's next?

What's Next?

Priority Lakes!

How we determine priority lakes?

Input → Policy → Implementation

LSP/WRAPS → 1W1P → PTM based PFM

Status: 6 of 15 1W1Ps are complete (40%)

8800: Total lakes in Upper Miss

436: Larger Lakes: 400 acres

376: Filter out: Impaired ⁽⁶⁰⁾

300: Filter out: Already 75% Protected ⁽⁷⁶⁾

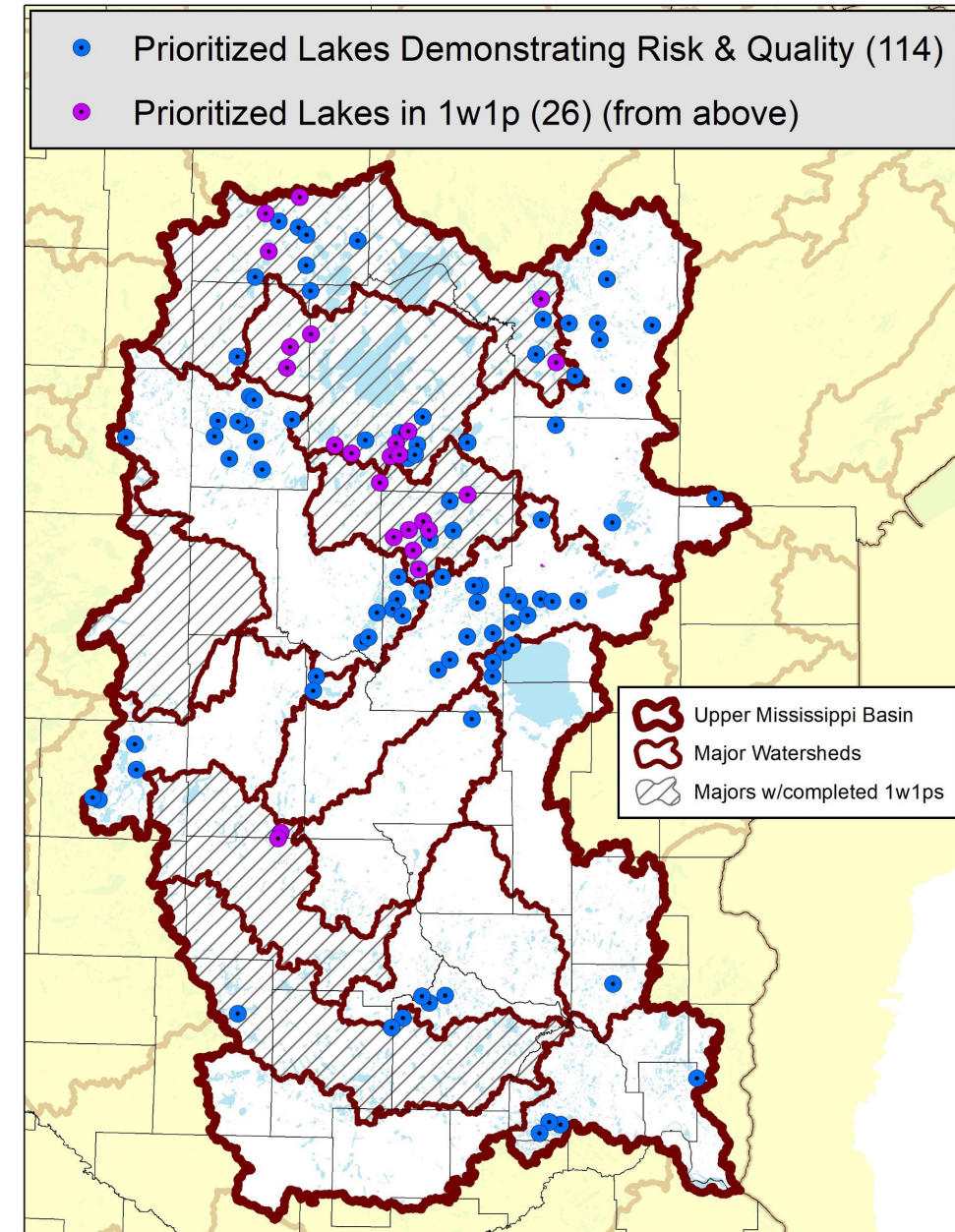
207: Filter out: Shallow/wild rice/NE Lakes ⁽⁹³⁾

166: Filter out: Watersheds with high disturbance ⁽⁴¹⁾



Filter for: Risk (Phos. Sensitivity = Higher/Highest)

& Quality (Lakes of Biological Sig. = High/Outstanding)

= **114** Priority Lakes in Basin (26 are also priority in 1w1ps)

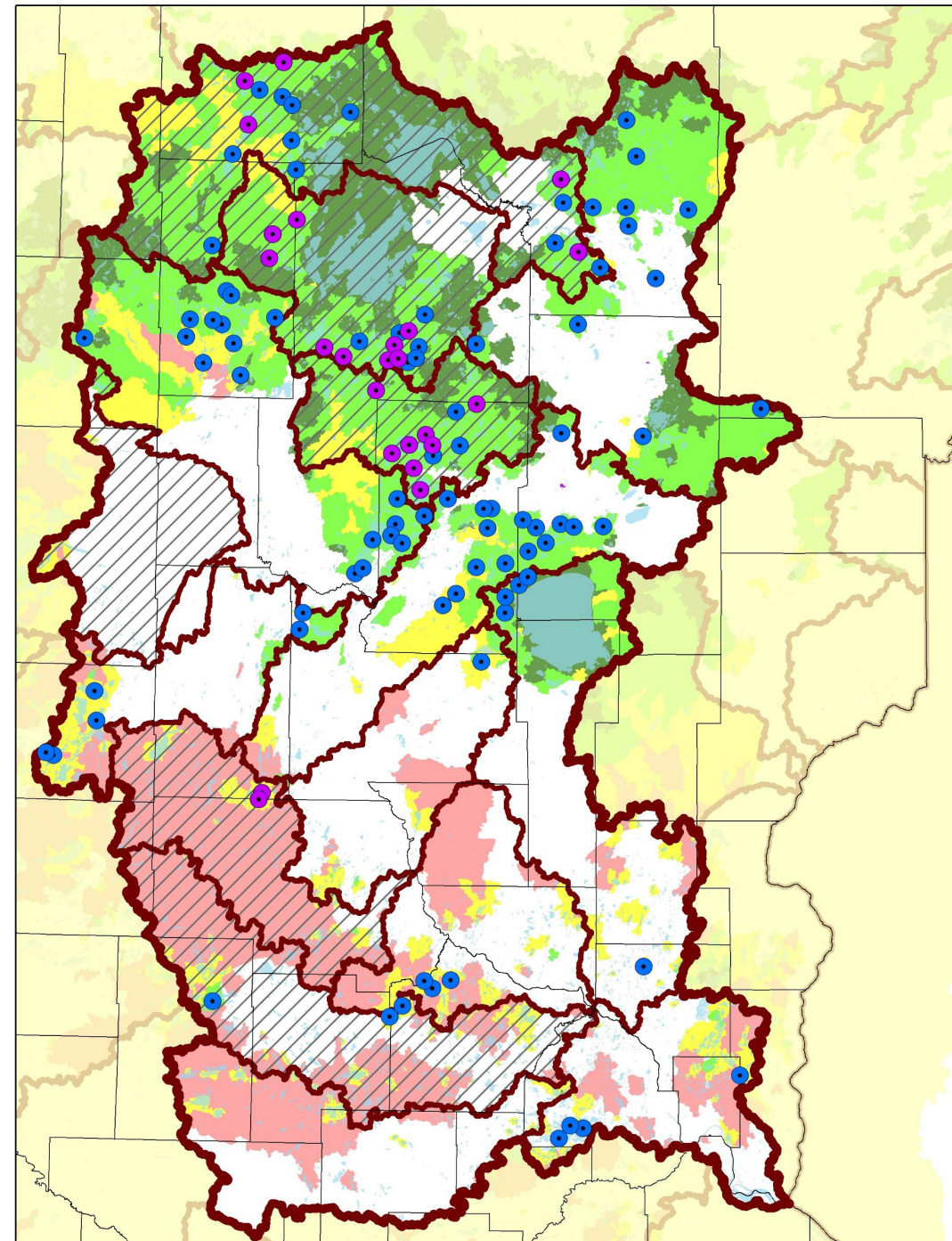


Prioritizing Lakes

-  Prioritized Lakes Demonstrating Risk & Quality (114)
-  Prioritized Lakes in 1w1p (26) (from above)

White areas on map are stream-based watersheds ->

- **Priority lakes align with DNR Fisheries research and local watershed plans!**
- ***Light green is the “sweet spot” where we maximize return on investment!***



Cost to Protect Priority Lakes

Acres Needed to Achieve Protection Goal for 26 Prioritized Lakes in existing 1W1Ps:
50,000 acres

Funding Sources:

50% via SFIA (general fund)

50% via Easements (LSOHC + Clean Water)

Costs:

\$19 M = Clean Water Fund (12,500 acres)

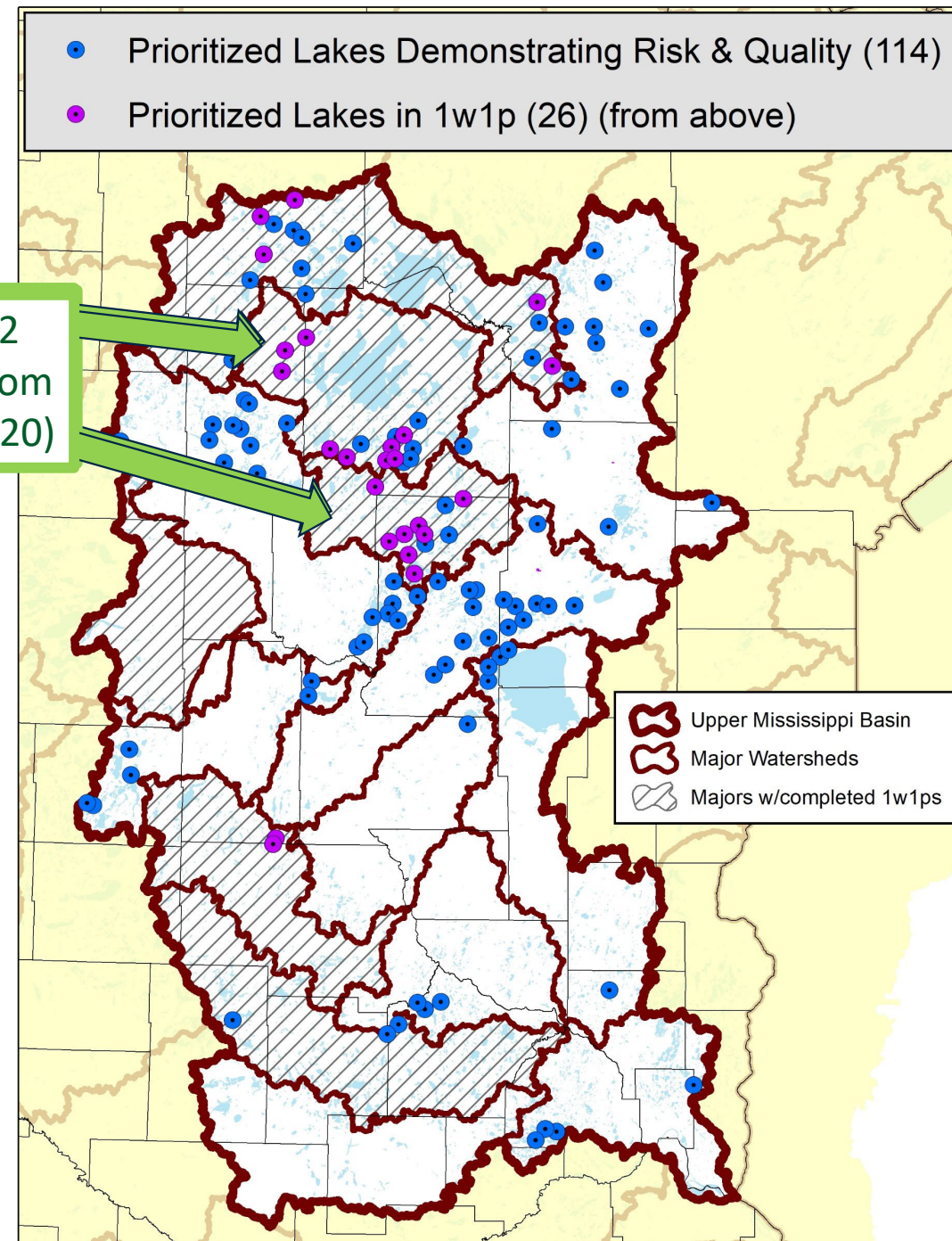
+\$19 M = Lessard-Sams Outdoor Heritage Fund (12,500 acres)

= **\$38 Million** = Easement cost for 25,000 acres

+ 33 Million for SFIA (25,000 acres for 100 years)

Land stays on the Tax Roles!

Phase 1,2
Funding from
LSOHC (2020)



Implementation Success Story: Crosby Area

37%



w/ Public Lands

46%



w/ 2017 Acquisition

51%



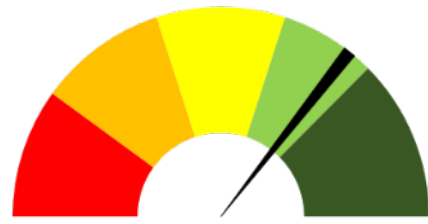
w/ 2017 Easement

66%



w/ SFIA

Current: 71%

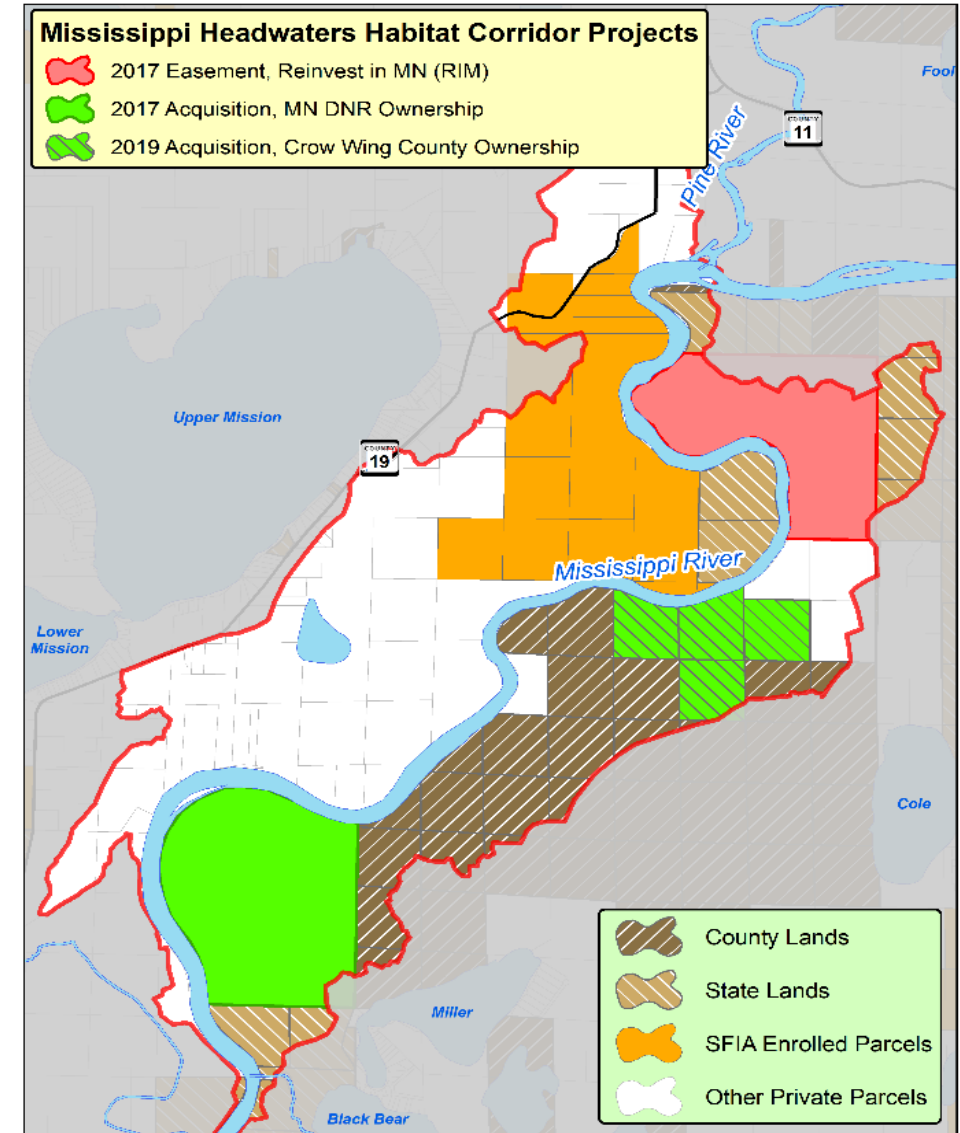


w/ 2019 Acquisition

How?

- Coordination
- Collaboration
- Co-investment

Wow!
SFIA
moved
the
needle
15
clicks!



26 Priority Lakes Data Table

Lake(s)	Major Watershed	Public Lands (ac)	Public Lands %	Public Waters (ac)	Public waters %	Wetlands (ac)	Wetlands %	Easements (ac)	Easements %	NGOs (ac)	NGOs %	SFIA (ac)	SFIA %	Total Protected (ac)	Total Protected %	Acres Needed for 75%
Pokegama	Mississippi Hdwtrs	1,989	6.7%	7,169	24.3%	3,392	11.5%	4,074	13.8%	0	0.0%	148	0.5%	16,773	56.8%	5,367
Deer	Mississippi Hdwtrs	3,486	20.8%	5,376	32.1%	1,130	6.7%	142	0.8%	0	0.0%	159	0.9%	10,292	61.4%	2,274
Bemidji	Mississippi Hdwtrs	1,546	9.8%	6,760	43.0%	515	3.3%	0	0.0%	0	0.0%	0	0.0%	8,821	56.1%	2,980
Gull	Mississippi Hdwtrs	947	13.6%	2,366	33.9%	830	11.9%	0	0.0%	0	0.0%	25	0.4%	4,168	59.7%	1,064
Turtle	Mississippi Hdwtrs	3,124	20.1%	3,777	24.3%	1,160	7.5%	0	0.0%	0	0.0%	0	0.0%	8,060	52.0%	3,574
Garfield	Leech Lake River	3,246	21.2%	1,795	11.7%	1,702	11.1%	2	0.0%	41	0.3%	441	2.9%	7,226	47.2%	4,256
Steamboat	Leech Lake River	2,660	25.2%	2,032	19.2%	639	6.0%	0	0.0%	65	0.6%	240	2.3%	5,636	53.3%	2,296
Kabekona	Leech Lake River	855	16.9%	2,454	48.6%	41	0.8%	85	1.7%	71	1.4%	202	4.0%	3,709	73.4%	82
Mule, Blackwater	Leech Lake River	1,179	16.6%	1,993	28.0%	538	7.6%	183	2.6%	0	0.0%	460	6.5%	4,353	61.2%	982
Girl, Woman	Leech Lake River	6,198	32.6%	6,789	35.7%	1,043	5.5%	264	1.4%	0	0.0%	149	0.8%	14,443	76.0%	Goal Met
Pleasant	Leech Lake River	938	10.9%	1,781	20.8%	937	10.9%	51	0.6%	0	0.0%	0	0.0%	3,707	43.2%	2,726
Birch	Leech Lake River	879	17.6%	1,360	27.2%	560	11.2%	11	0.2%	0	0.0%	13	0.3%	2,823	56.5%	921
Ada	Pine River	3,100	35.3%	2,204	25.1%	893	10.2%	23	0.3%	0	0.0%	88	1.0%	6,308	71.9%	271
Roosevelt	Pine River	5,430	40.0%	2,467	18.2%	643	4.7%	129	0.9%	0	0.0%	376	2.8%	9,044	66.6%	1,147
Lower Hay	Pine River	524	6.1%	1,710	20.0%	645	7.6%	0	0.0%	37	0.4%	14	0.2%	2,930	34.3%	3,476
Rush	Pine River	371	7.0%	2,951	56.0%	84	1.6%	19	0.4%	0	0.0%	0	0.0%	3,425	64.9%	531
Ossawinnamakee	Pine River	999	7.7%	2,118	16.4%	1,007	7.8%	426	3.3%	344	2.7%	22	0.2%	4,915	38.1%	4,754
Pelican	Pine River	905	5.1%	9,643	54.1%	567	3.2%	121	0.7%	9	0.0%	114	0.6%	11,359	63.8%	2,003
Big Trout	Pine River	2,430	29.4%	1,549	18.7%	212	2.6%	127	1.5%	0	0.0%	590	7.1%	4,908	59.4%	1,290
Whitefish	Pine River	722	4.6%	8,797	55.9%	358	2.3%	149	0.9%	0	0.0%	242	1.5%	10,268	65.3%	1,532
Total		41,526		75,090		16,895		5,806		566		3,282		143,166		41,526

Complete Upper Mississippi River Basin Progress Report in the works to show detailed progress by major watershed: the draft summary pages and Pine River Watershed provided as a handout.

Questions?

Thank you!

Questions or requests for printed handouts can be sent to me at: Crystal.hcswcd@gmail.com

We would welcome the subcommittee's input and participation in guiding the completion of the Upper Mississippi Basin Progress Report, please let us know if you have feedback on the example/draft pages provided and/or if you'd like to participate in the report building work sessions this winter.

A call to develop a Lakes Conservation Vision for Minnesota.

THERE'S STILL TIME TO PROTECT OUR LAKES



" CONSERVATION PRIORITY LIES AT THE
INTERSECTION OF RISK AND VALUE. "