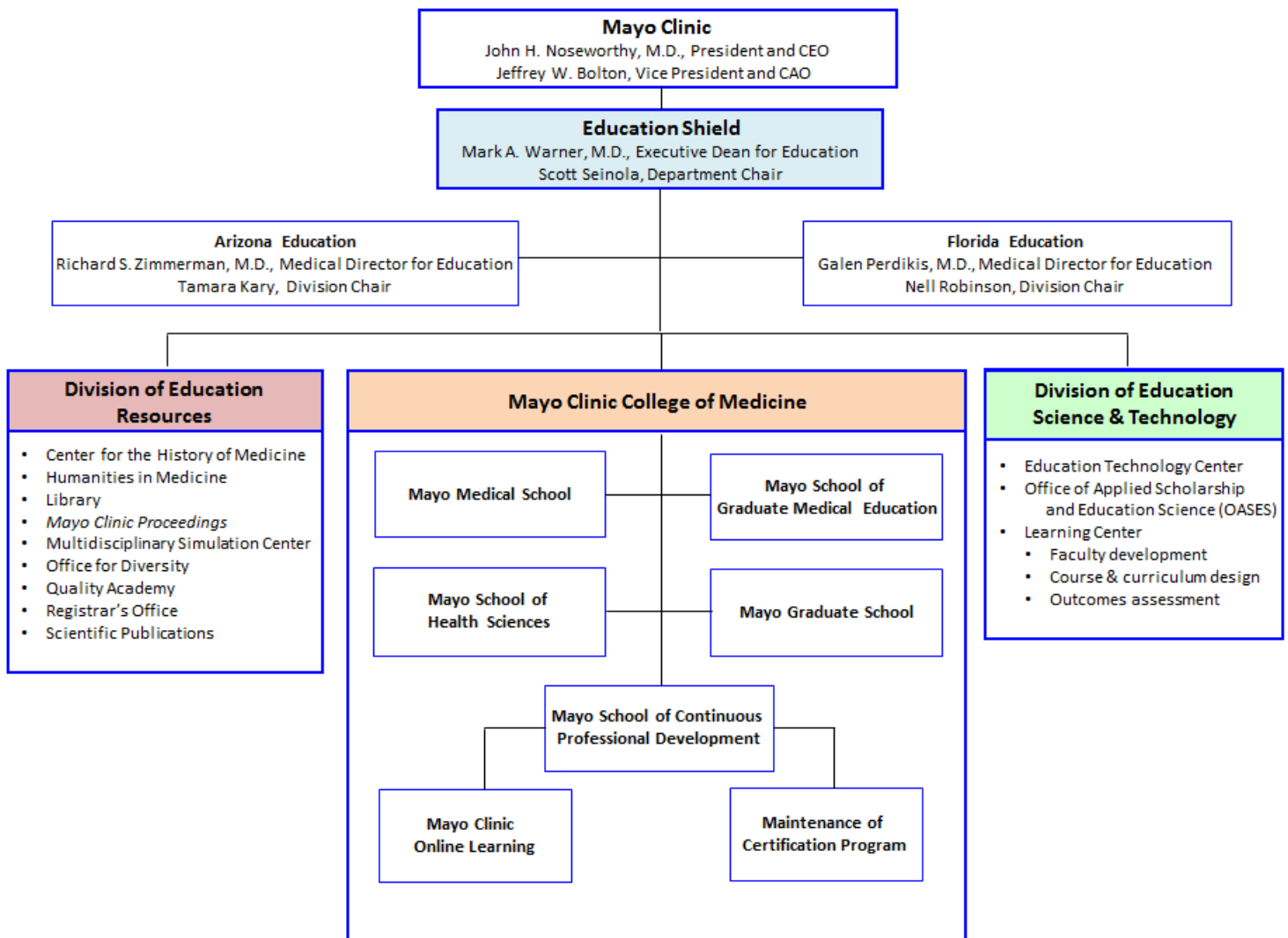




- **Education** is represented by one of the three shields of the Mayo logo. Dating from 1894, Mayo Clinic has profoundly influenced health care education nationally and internationally.
- Our mission in Education is, simply put, to **“Prepare Today for the Practice of Tomorrow.”** This is done through partnership with our communities to identify the people and skills needed to best serve our patients.
- The **Mayo Clinic College of Medicine** is comprised of five schools and other critical support functions, each with a physician leader and administrative partner.



Mayo Clinic College of Medicine

- The **Mayo School of Health Sciences** consists of 70 programs and 1100 allied health students. MSHS offers clinical doctoral and Master's degrees as well as certificates in diploma programs and clinical residencies and fellowships for allied health providers. The school partners with a number of large universities in our regions, including the University of Minnesota, Winona State, Arizona State, the University of North Florida; local associate-degree schools in our 3 major sites in MN, AZ, and FL; and a number of high quality private colleges throughout the country.
- The **Mayo Graduate School** provides doctoral training for approximately 200 students annually in 7 scientific tracks (e.g., Neuroscience, Virology and Gene Therapy). In addition, the school graduates 100 Master-level students each year, many in translational clinical science. The graduate school, in collaboration with the Mayo Medical School, also has an MD/PhD training program with approximately 50 students at any given time.
- The **Mayo Medical School** is a 4-year program with 200 students. The school will double in size by 2020 when all 4 classes of 50 students each will be present on our new Arizona campus. In collaboration with Arizona State and the University of Minnesota, a unique science of health care delivery certificate, with an option for a Master's degree, will be required of all students. Starting in 2016, a subset of the students will complete their third and fourth year requirements at our Florida campus.
- The **Mayo School of Graduate Medical Education** is the oldest graduate medical education school in the nation and provides training for nearly 1600 residents and fellows at any given time. The school is one of the country's largest with over 270 specialty programs. More than 23,000 physicians worldwide have been school alumni; more than 25% of all physicians in MN are alumni of the school. Approximately 35% of the school's residents are enrolled in a primary care specialty such as family medicine, internal medicine, and obstetrics.
- The **Mayo School of Continuing Professional Development** oversees the ongoing educational needs for practicing clinicians. They offered 120 programs in 2013, reaching more than 130,000 physicians and advanced health care providers.

In addition to the five schools, the **Mayo Clinic College of Medicine** collaborates with our clinical departments and others to provide additional functions that support institutional goals.

- **Simulation Centers** at all three campuses in MN, AZ, and FL provide state of the art technology to teach team work and skills for a broad swath of Mayo personnel (e.g., Ebola simulation for personnel ranging from security guards to housekeepers to nurses and physicians). *In-situ* simulation is being used extensively in our Minnesota and Wisconsin health system.
- The **Mayo Clinic Proceedings** has become the third-largest general medical journal in the world (behind JAMA and the New England Journal of Medicine) and is now one of the world's most-cited medical journals.
- The **Office of Applied Scholarship and Educational Science** is our education science unit. This group provides training in education-related assessment, curriculum design, and research. It also oversees endowed medical education research funds and is developing a Master's degree program in medical education.
- Our **Nursing Department** is remarkably large, diverse, and has dedicated personnel who work 24/7/365. Thus, the department has unique challenges in addressing the initial training and continuing education of nearly 15,000 nurses and other department members throughout Minnesota, Wisconsin, Iowa, Georgia, Florida, and Arizona. Mayo Clinic Nursing partners with academic institutions to identify opportunities to enhance the preparation of the future nursing workforce and provides clinical training to 1800 nursing students from 11 institutions annually.
- **Mayo Clinic Online Learning** is building a strong infrastructure to provide an online learning environment internally as well as externally. Our online effort is being accomplished through partnerships with public universities (e.g., ASU, Stanford, New York University, Winona State) and private education businesses (e.g., Apollo, Khan Academy). Online learning is applied within our schools and is available for the organization to assist in keeping our 32,000 licensed health care employees current in their clinical practices, reach those who work in rural areas, and improve the overall health care of the communities in which we work.