



## Minnesota Agricultural Water Quality Certification Program

*Certifying that Minnesota's farms and waters can prosper together*

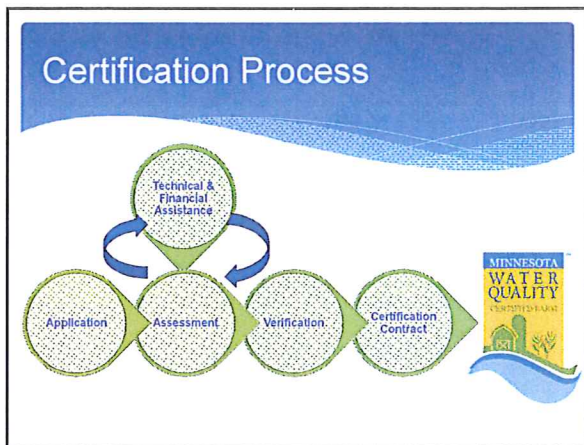


Matthew Wohlman  
Assistant Commissioner  
Minnesota Department of Agriculture



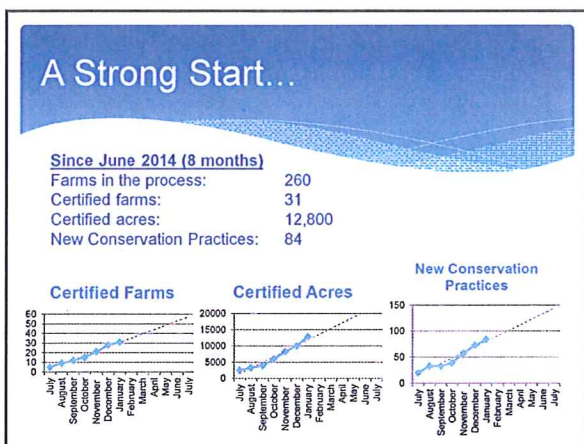
## Legislative Actions

- Placed program in statute in 2013
- Provided \$3 million in Clean Water funding (biennium)
- Statute adopted Advisory Committee's recommendations.

## Certification Contract

- Contract between the State of Minnesota and certified producer
- Outlines duties a producer must perform to retain certification
- Defines certainty and grants it to producer
- Field assessment records attached as appendix to contract

## Regional Conservation Partnership Program Award



**RCPP \$9 million award to MAWQCP**

- The award is through 2019
- The award is match dependent.
- The award is not scalable.
- The award is for demonstrating a statewide rollout.

## Governor Recommends \$5 million for MAWQCP

### State- CWF

#### Annually FY16 & FY17

Program Salary & Fringe (5 FTEs)	\$450,000	
Program Administration	\$412,500	
Financial & Technical Assistance	\$1,673,500	(cost share for conservation implementation)
<b>Total Biennium</b>	<b>\$2,500,000</b>	

### Federal- RCPP

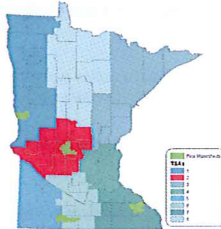
#### NRCS

Producer Contracts	\$2,250,000	(cost share for conservation implementation)
<b>RCPP Total FY 16-19</b>	<b>\$9,000,000</b>	

**81% of state and federal investment goes to Greater Minnesota.**

## Moving Toward Statewide Implementation

- Regional build-out of MAWQCP over time
- Employ pilot-proven systems and operations
- Utilize similar regional structures used by Soil and Water Conservation Districts



Soil and Water Conservation District Technical Service Areas (TSAs)

## Middle Sauk River Pilot Area

- Stearns County is top dairy-producing county in the State
- 134,620 acres, mostly cultivated crops and pasture/hay
- Local advisory committee oversees implementation of program
- Regional expansion of program to SWCD Technical Service Area 2



Allen Altendahl, a corn, soybean and pasture farmer in the Middle Sauk River watershed receiving certification from Stearns County SWCD Staff.

## Jared and Kelsey Nordick

- Farm in partnership with father Jerry in Rothsay, Minnesota
- Corn and soybean rotation
- Participate in MDA's Discovery Farms program
- Conservation practices used in operation include: mulch tillage, drainage water management, water and sediment control basins, filter strips



Jared and Jerry Nordick were named the first certified farmers in Minnesota

## Partners

