



Improving mobility  
Easing congestion  
Strengthening our communities

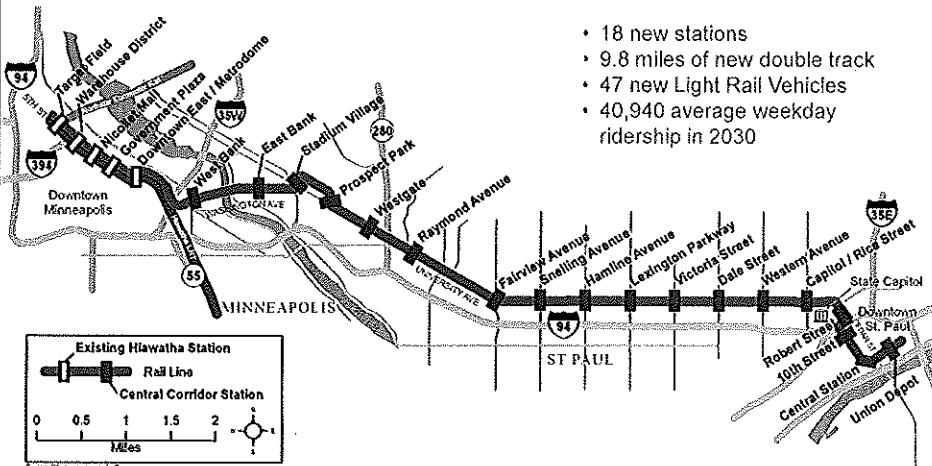
Central Corridor Light Rail Transit



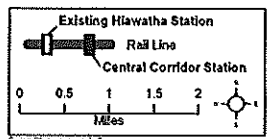
# Legislative Commission on Metropolitan Government

September 25, 2012

## Route and Stations




- 18 new stations
- 9.8 miles of new double track
- 47 new Light Rail Vehicles
- 40,940 average weekday ridership in 2030

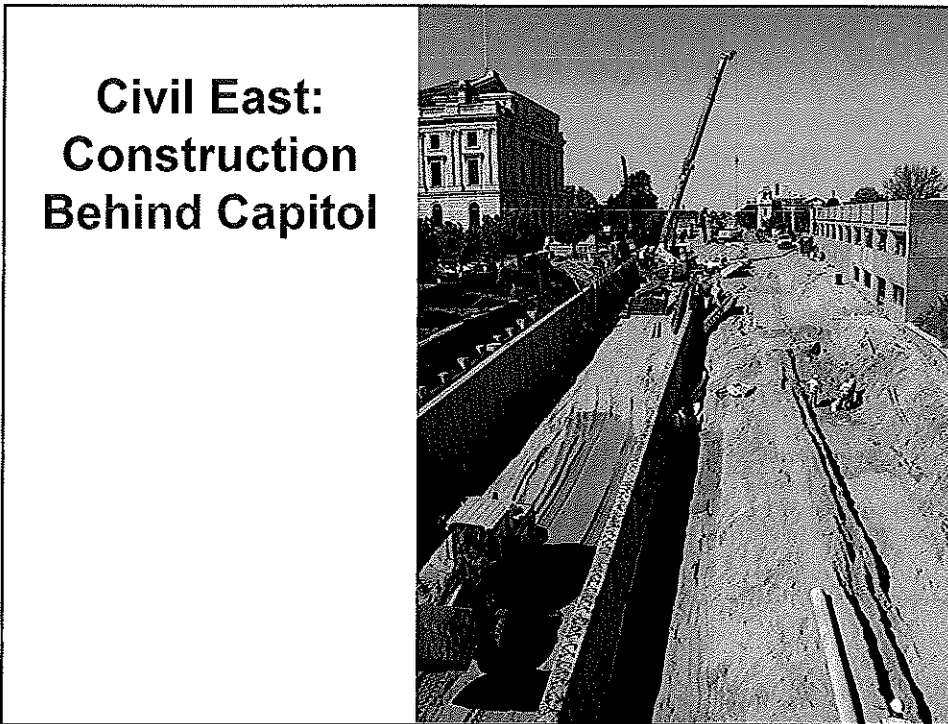
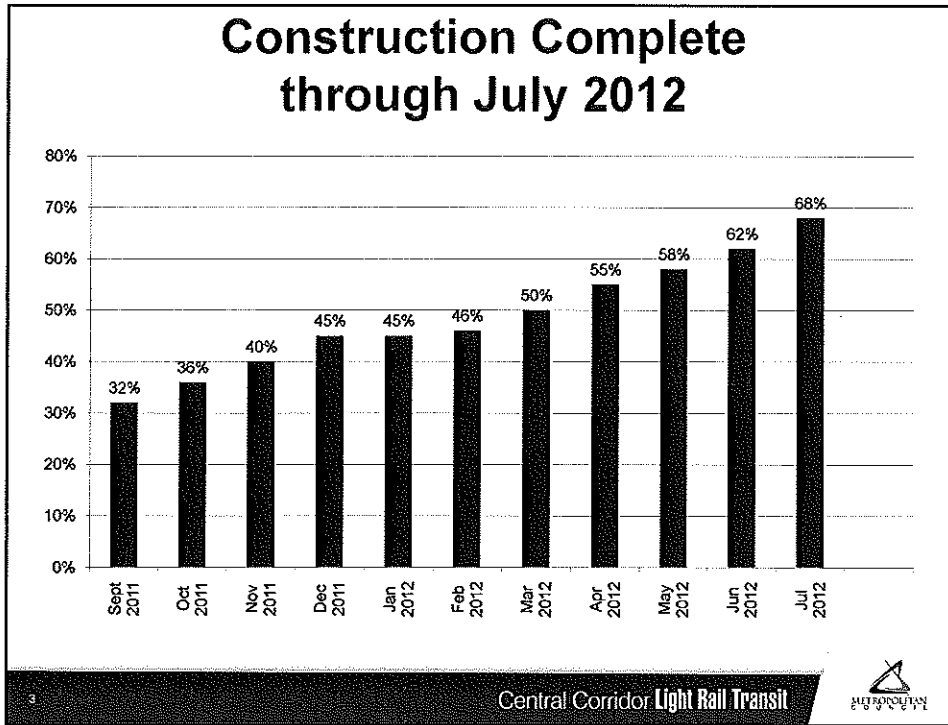


Existing Hiawatha Station  
Rail Line  
Central Corridor Station

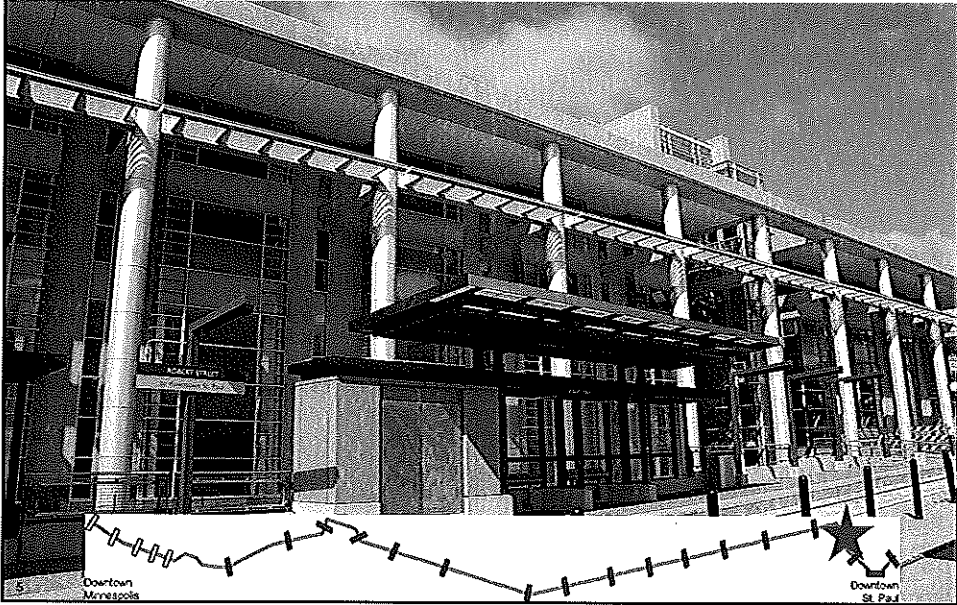
0 0.5 1 1.5 2 Miles

Central Corridor Light Rail Transit

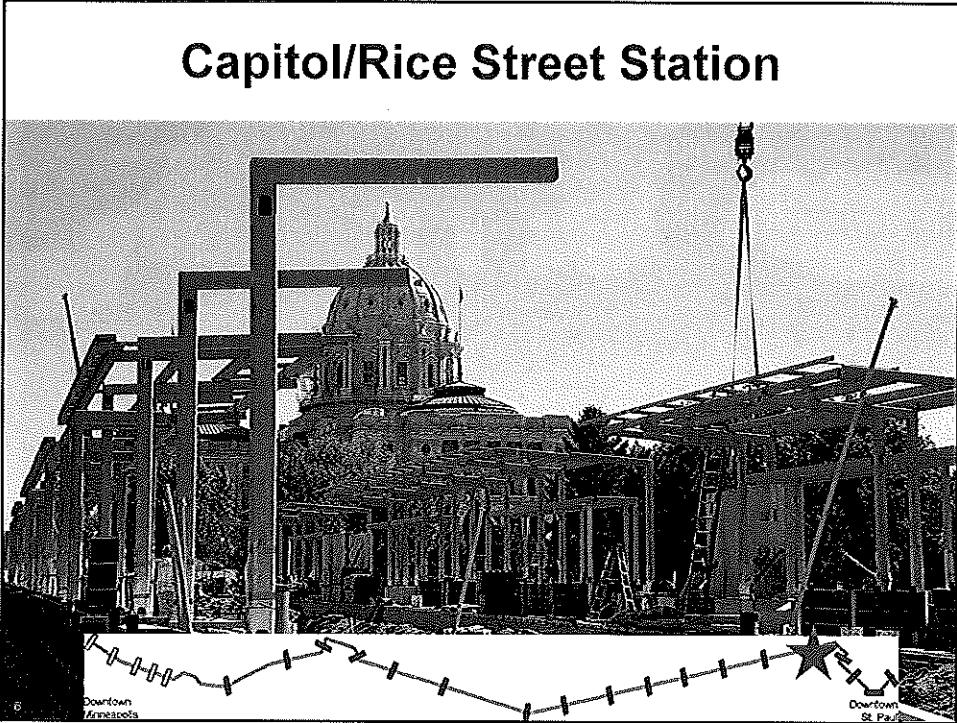




# Robert Street Station

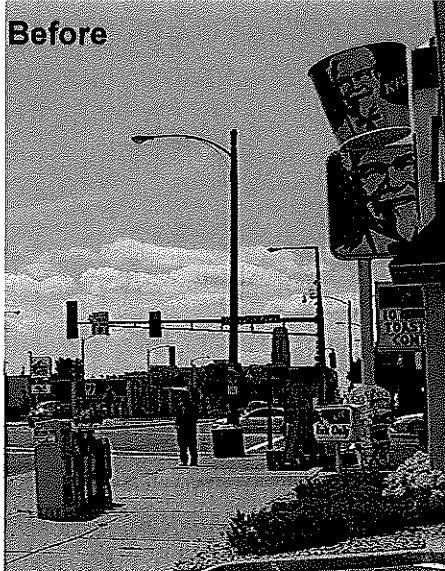


# Capitol/Rice Street Station

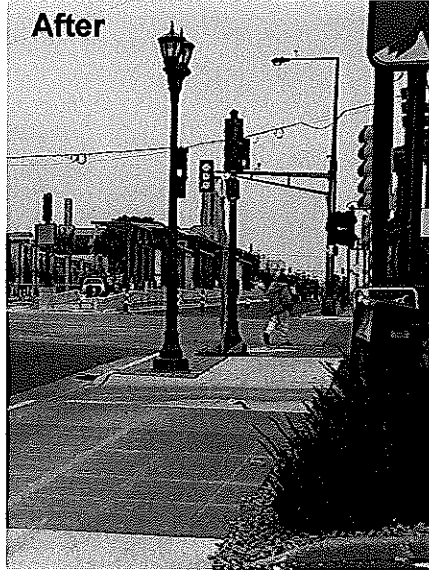


## University Avenue

Before

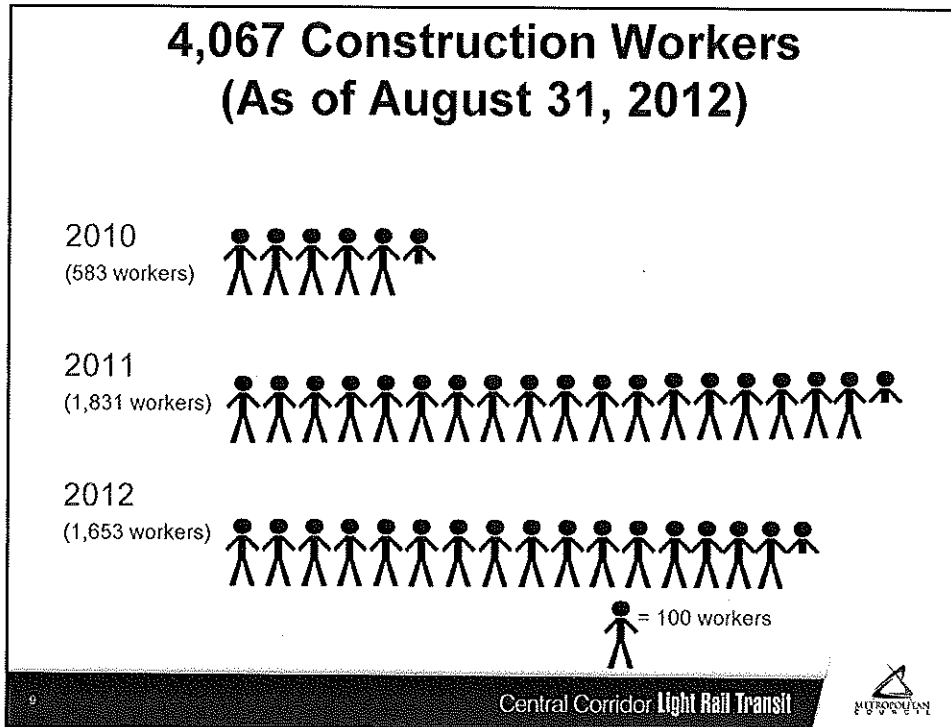


After



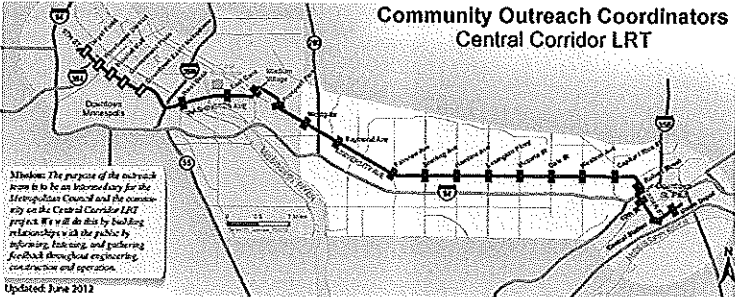
## 48 Workers in 650 Ft. (Pascal to Hamline)












## Construction Communication


### Community Outreach Coordinators Central Corridor LRT



*Mission: The purpose of the outreach here is to be an intermediary for the Metropolitan Council and the community on the Central Corridor LRT project. We will do this by building relationships with the public by informing, listening, and gathering feedback throughout engineering, construction and operation.*

Updated: June 2012

<p><b>Minneapolis - Downtown to Emerson</b> New Stations: 1st Park, East Park, Stadium Village, Prospect Park</p>  <p><b>Jessica Hill</b> Minneapolis - Lead 651.622.1342 jessica.hill@metrolink.net</p>	<p><b>St. Paul - Emerald to MN</b> Stations: Wemple, Raymond Ave, Fairview Ave, Shelton Ave, Hamline Ave, Lechman Plaza, Victoria St, Cole St, Western Ave, Capitol Area, Robert St</p>  <p><b>Nkongo Cigolo</b> St. Paul University Area/Capitol Area - Lead 651.622.1358 nkongo.cigolo@metrolink.net</p>	<p><b>Downtown St. Paul - PA to Lowertown</b> Stations: 10th St, Central Union Depot</p>  <p><b>Dana Happel</b> Downtown St. Paul - Lead 651.622.1364 dana.happel@metrolink.net</p>	
<p><b>Dan Pfeiffer</b> Minneapolis - Alternate 651.622.1442 dan.pfeiffer@metrolink.net</p> 	<p><b>Michelle Webb</b> University Area/Capitol Area - Alternate 651.622.1355 michelle.webb@metrolink.net</p> 	<p><b>Abdi Raqib</b> University Area/Capitol Area - Person 651.622.1328 abdi.raqib@metrolink.net</p> 	<p><b>Indira Manandhar</b> Downtown St. Paul - Person 651.622.1353 indira.manandhar@metrolink.net</p> 

Central Corridor Light Rail Transit 

# \$1.2 M Business Marketing Program

**ON THE GREEN LINE**

**GO GLOBAL. GO LOCAL.**

**Wiene-wiches! (Need We Say More?)**

**Making Minneapolis Beautiful Since 2000.**

**A Garden of Good Eats.**

**Come Home to Bonnie's!**

**From Russia, with Love.**

**Nothing Fancy. Just Fantastic Doughnuts!**

**Parlez-Vous Croissant? We Do.**

**Jai Does Amazing Thai!**

**A Uniquely Delicious Experience!**



# \$1.2 M Business Marketing Program

**From Russia, with Love.**

**RUSSIAN TEA HOUSE -**  
Near Fairview & University  
1753 University Avenue West  
Serving Authentic Russian Comfort Food  
[www.onthegreenline.com](http://www.onthegreenline.com)

**Come Home to Home Cooking;  
Come Home to Bonnie's!**

**BONNIE'S CAFE - 1 Block West**  
Serving Breakfast and Lunch Comfort Food  
2160 University Avenue West  
FIND BONNIE'S ON FACEBOOK  
[www.onthegreenline.com](http://www.onthegreenline.com)



# \$4 M Small Business Loan Program

- \$4 million available to small businesses (<\$2M sales/year)
  - Maximum amount \$20,000/business
  - Demonstrate revenue loss
  - One-fifth of loan forgiven for each year the business remains on the corridor
- Over 130 business loans totaling \$2.1 million have been approved since inception

13



# Business Census Data Changes Since March 2011

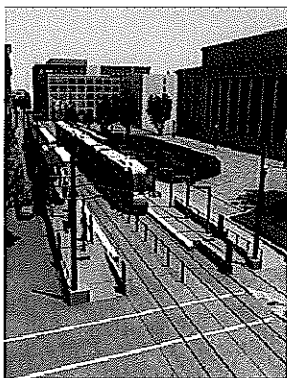
Out of over 1,400 businesses identified

Businesses*	March 2011-June 2012	July 2012	Total
Opened on corridor	73	6	79
Closed on corridor	62	4	66
Moved w/in corridor	20	0	20
Moved off corridor	11	1	12

14



## More Information



Check out our website:

- [www.centralcorridor.org](http://www.centralcorridor.org)

Contact Central Corridor  
Project Office:

- 540 Fairview Avenue North  
St. Paul, MN 55104
- Construction Hotline: 651-  
602-1404
- Comment Line: 651-602-1645
- Email:  
[centralcorridor@metc.state.  
mn.us](mailto:centralcorridor@metc.state.mn.us)

