



Improving mobility
Easing congestion
Strengthening our communities

Central Corridor Light Rail Transit




Legislative Commission on Metropolitan Government

October 12, 2012

1


Today's Topics

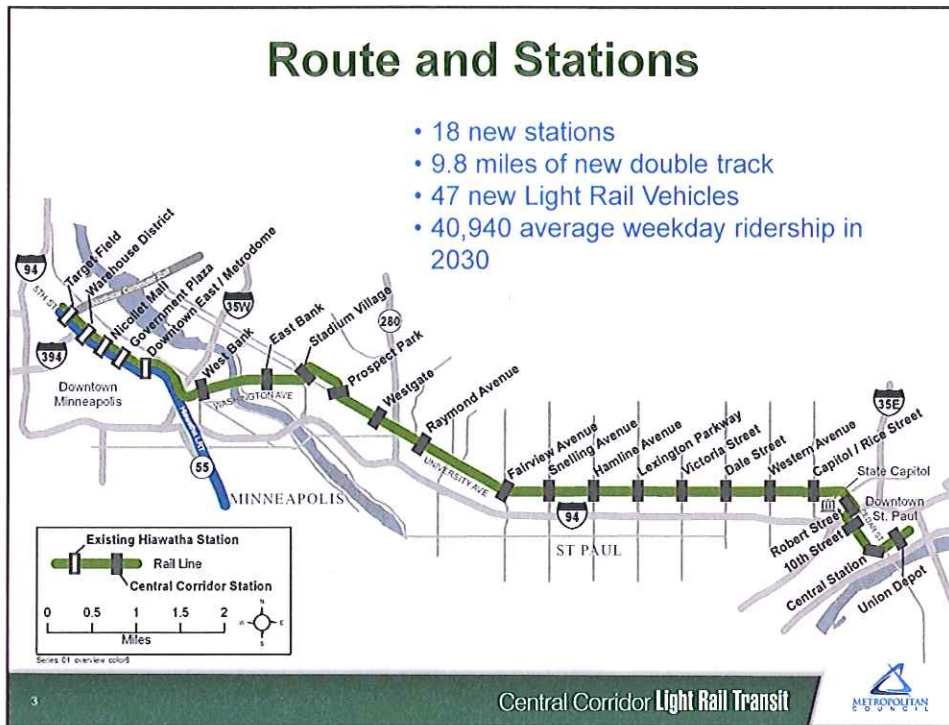


- Construction Status
- Response to concerns
 - Infill stations
 - Parking
 - Lessons learned from 2011 construction season
 - Business support

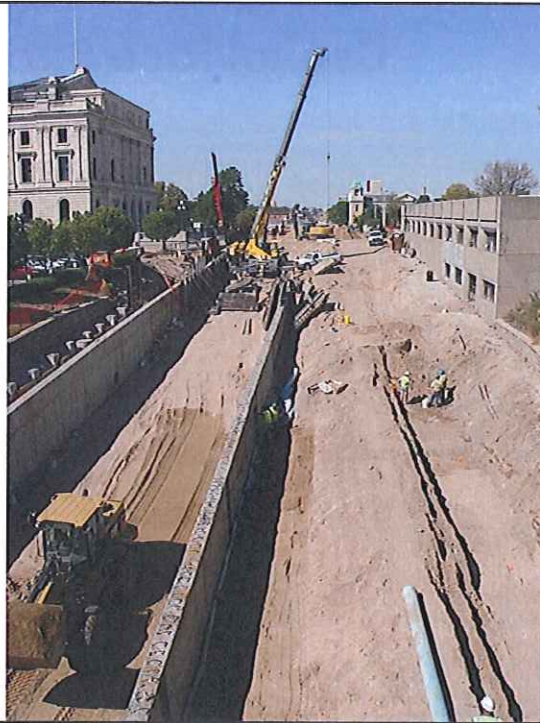
2

Central Corridor Light Rail Transit





Civil East: Construction Behind Capitol



Robert Street Station



Capitol/Rice Street Station



University Avenue



48 Workers in 650 Ft. (Pascal to Hamline)



4,067 Construction Workers (As of August 31, 2012)

2010

(583 workers)



2011

(1,831 workers)

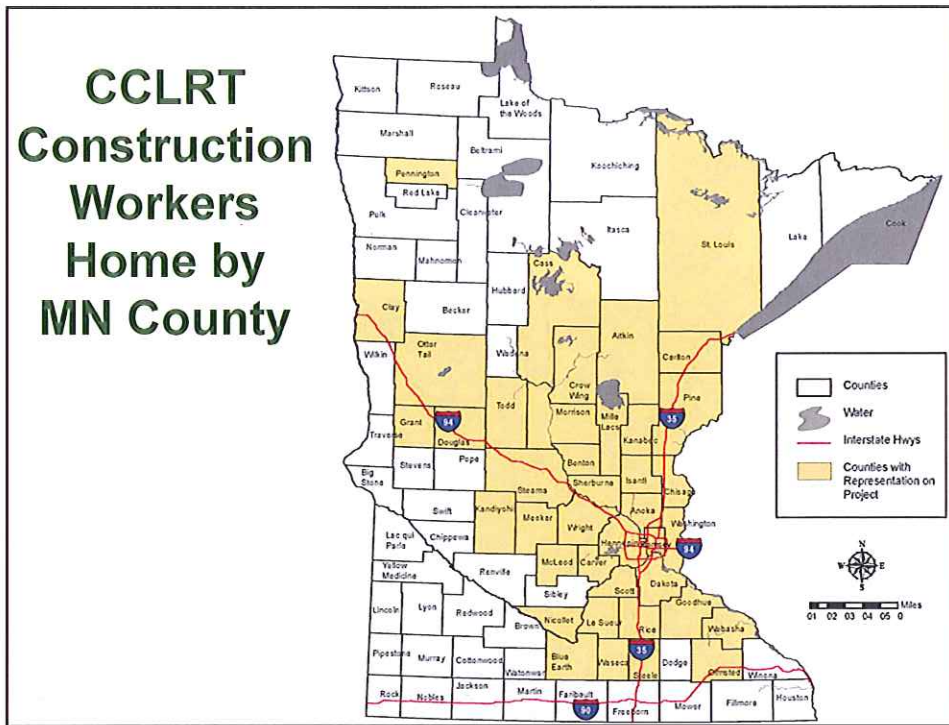


2012

(1,653 workers)



 = 100 workers



Improving mobility
Easing congestion
Strengthening our communities

Central Corridor Light Rail Transit

Response to Concerns

12

Met Council Seeks Input From the Public



2007 Former Chair Bell Community Advisory Committee



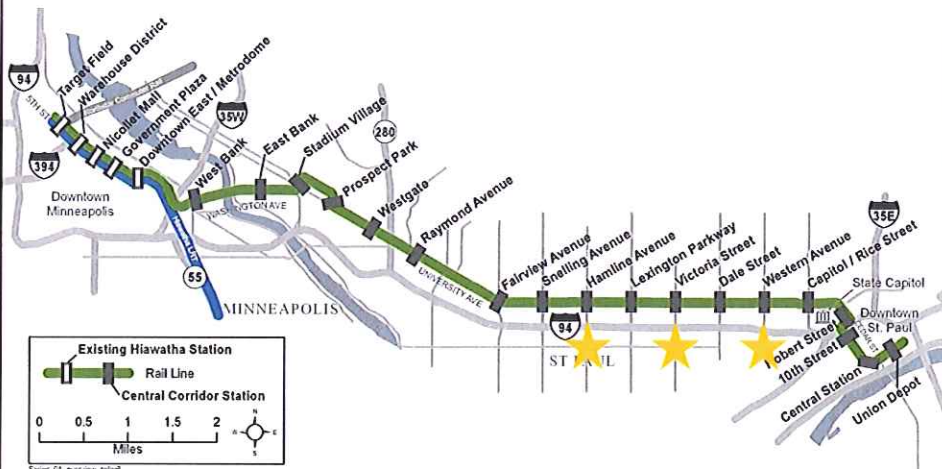
2012 Chair Haigh Listens to business concerns on tour hosted by AEDA

13

Central Corridor Light Rail Transit



Added Three Stations



14

Central Corridor Light Rail Transit



Address On-Street Parking Impacts

Feb. 2008

- Loss of on-street parking due to design changes made in response to public input
 - Add 3 stations
 - Add and extend turn lanes
 - Add more pedestrian crossings

Sept. 2008

- Create Parking Solutions Team

Apr 2009

- Seek input from Advisory Cmtes

May-July '09

- Conduct 11 workshops with biz

Spring 2010

- City created Parking Grant Program

15

Central Corridor Light Rail Transit



Example of Parking Improvements



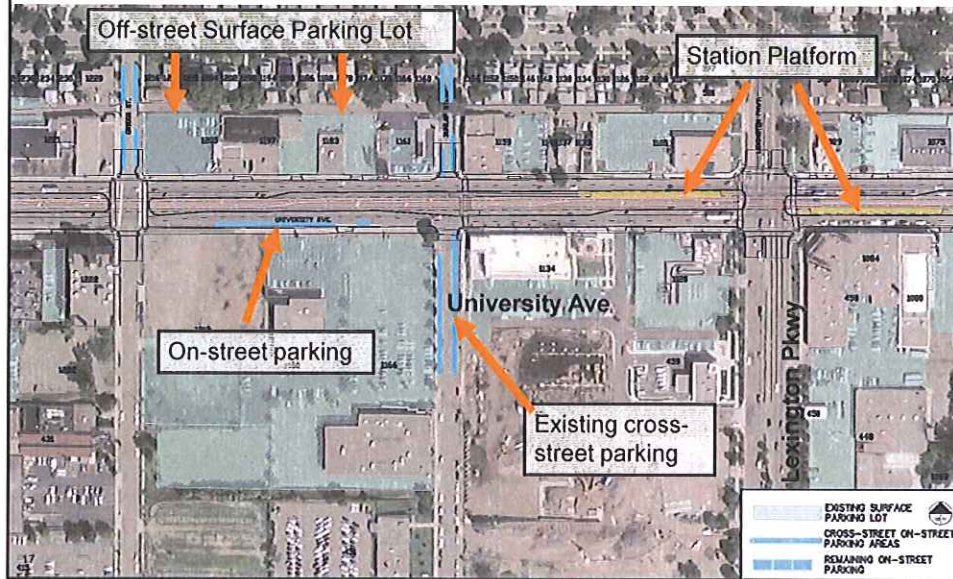
Subway Added a Second Parking Lot

16

Central Corridor Light Rail Transit



Mapped Parking with LRT



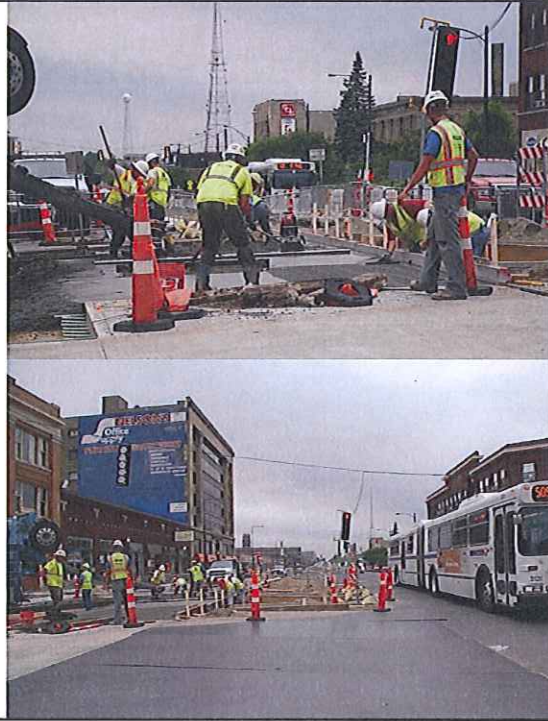
Lessons Learned



- Internal meetings in Jan 2012
 - CCPO staff
 - CCPO staff with contractors
- External meeting in Jan/Feb 2012
 - 1/23 Business roundtable
 - 1/27 Business Resources Collaborative
 - 1/27 University of Minnesota
 - 2/1 Project Advisory Cmte
 - 2/8 Corridor Mgmt Cmte
 - 2/13 Transportation Cmte
 - 2/15 project partners elected officials

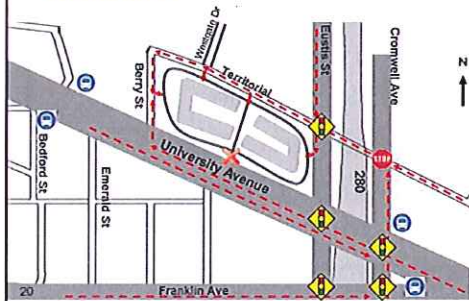
Issue: North/South Lane Restrictions

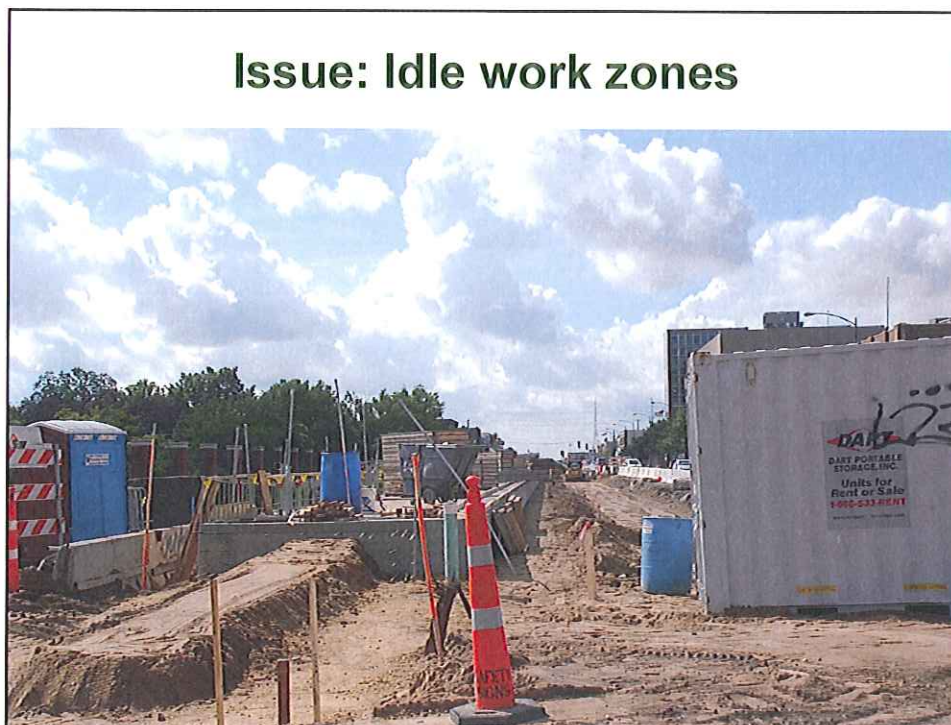
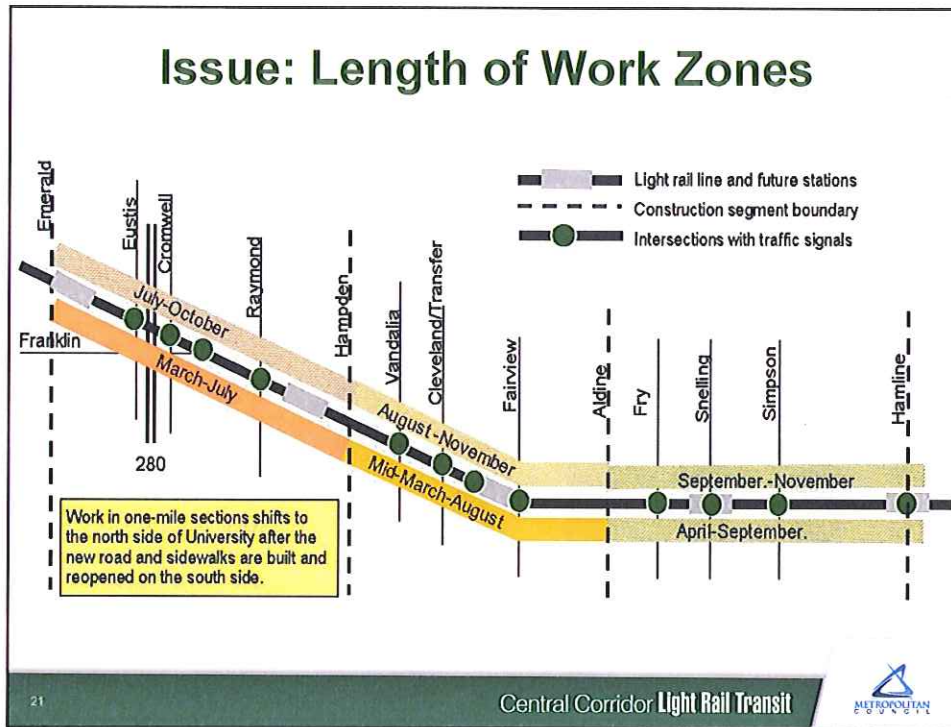
- Phased intersection construction to maintain thru traffic
- 2-3 month impact to intersection



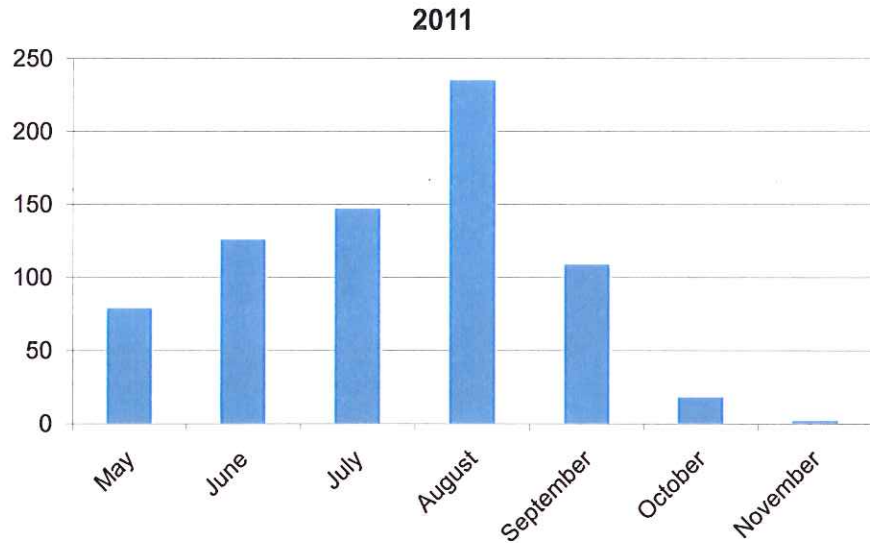
Action: Full Closure of Select Intersections

- Expedite work over 2-4 weeks
- Use variable message signs to provide detour directions
- Provide maps showing detours





Action: New Workers Added By Month



Action: Link construction zone size with crew resources



Issue: Construction vehicles parked on private property, blocked access



Action: Continue to have inspectors track issues; add CCPO staff



Issue: No Accessible Ramp to Bus Stop



Action: Temp bus stop with ramp and protective railings, barriers and trash cans

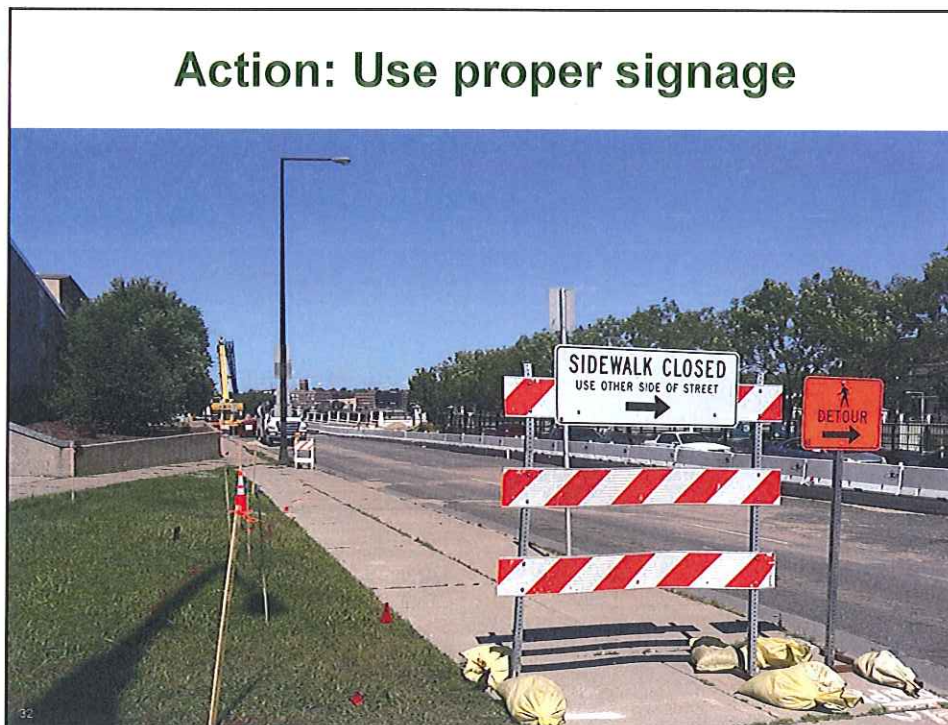


Issue: Utility installation and sidewalk replacement affected ped access



Action: Use ADA temp bridges to provide ped access during sidewalk construction





Issue: Maintaining Temporary Sidewalks and Access



Action: Conduct ADA Field Checks





Improving mobility
Easing congestion
Strengthening our communities

Central Corridor Light Rail Transit




Business Support

35

Construction Communication

Community Outreach Coordinators Central Corridor LRT




Mission: The purpose of the outreach team is to be an intermediary for the Metropolitan Council and the community on the Central Corridor LRT project. We will do this by building relationships with the public by informing, listening, and gathering feedback throughout engineering, construction and operation.

Updated: June 2012

Minneapolis - Downtown to Emerald	St. Paul - Emerald to 194	Downtown St. Paul - 194 to Lowertown
<p>Stations: West Bank, East Bank, Stadium Village, Prospect Park</p> <p>Jessica Hill Minneapolis - Lead (612) 622-1840 Jessica.Hill@metc.state.mn.us</p>	<p>Stations: Westgate, Raymond Ave, Fairview Ave, Swelling Ave, Hamline Ave, Lexington Park, Victoria St, Duke St, Western Ave, Capitol Rise, Robert St</p> <p>Nkongo Cigolo St Paul University Ave/Capitol Area - Lead (612) 622-1559 Nkongo.Cigolo@metc.state.mn.us</p>	<p>Stations: 10th St, Central Union Depot</p> <p>Dana Happel Downtown St. Paul - Lead (612) 622-1954 Dana.Happel@metc.state.mn.us</p>
<p>Dan Pfeiffer Minneapolis - Alternate (612) 622-1842 Dan.Pfeiffer@metc.state.mn.us</p>	<p>Michelle Webb University Ave/Capitol Area - Alternate (612) 622-1855 Michelle.Webb@metc.state.mn.us</p>	<p>Abdi Raqib University Ave/Capitol Area - Intern (612) 622-1928 Raqib.Abdul@metc.state.mn.us</p>
		<p>Indira Manandhar Downtown St. Paul - Intern (612) 622-1833 Indira.Manandhar@metc.state.mn.us</p>

36

Central Corridor Light Rail Transit



Notify Businesses By Going Door to Door



37

Central Corridor Light Rail Transit



Featured Businesses in the Weekly Construction Updates

Central Corridor
Light Rail Transit

**St. Paul University Avenue East
Construction Update**

For September 29 - October 5, 2012



38

Central Corridor Light Rail Transit



Provide Signage

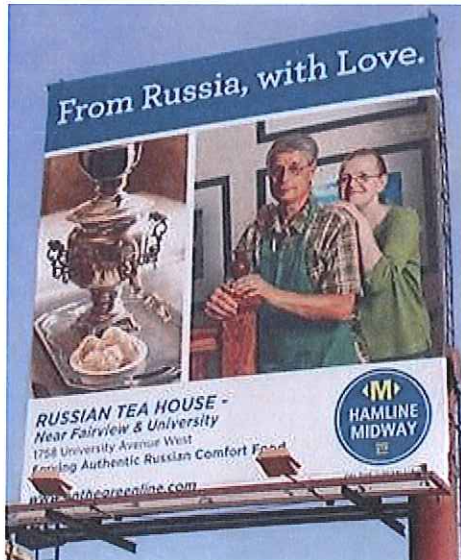


39

Central Corridor Light Rail Transit



\$1.2 M Business Marketing Program



40

Central Corridor Light Rail Transit



\$1.2 M Business Marketing Program

ON THE GREEN LINE

GO GLOBAL. GO LOCAL.

The Green Line is currently seeking to use the Central Corridor Light Rail Transit to promote Minneapolis and the Twin Cities to Minneapolis, St. Paul, and the surrounding area. The Green Line is currently seeking to use the Central Corridor Light Rail Transit to promote Minneapolis and the Twin Cities to Minneapolis, St. Paul, and the surrounding area. The Green Line is currently seeking to use the Central Corridor Light Rail Transit to promote Minneapolis and the Twin Cities to Minneapolis, St. Paul, and the surrounding area.

Wiene-wiches! (Need We Say More?)

Pat Starr THE WIENERY
454 Cedar Ave South
(612) 333-5798
wienery.com

Making Minneapolis Beautiful Since 2000.

Alex Levine STEADY TATTOO & BODY PIERCING
714 Washington Ave Southeast
(612) 379-4455 • steadytattoo.com

A Garden of Good Eats.

Tech Huy & Spencer Ung U GARDEN CHINESE CUISINE
2725 University Ave Southeast
(612) 378-9255 • ugardenchineserestaurant.com

Come Home to Bonnie's!

Bonnie Roell BONNIE'S CAFE
2540 University Ave West
(651) 644-3333
Bonnie's Cafe & Deli
10000 - 10000 by City Pages

From Russia, with Love.

Nikolai & Linda Alenoy RUSSIAN TEA HOUSE
732 University Ave West
(651) 645-4744

Nothing Fancy. Just Fantastic Doughnuts!

Keoni & Eli Nguyen SUGARUSH BAKERY
732 University Ave West
(651) 797-3354

Parlez-Vous Croissant? We Do.

Edna Nguyen & Tony Le TRUNG NAM FRENCH BAKERY
732 University Ave West
(651) 229-0817

Jai Does Amazing Thai!

Jai Yang BANGKOK CUISINE
422 University Ave West
(651) 414-5048
bangkok-cuisine.com

A Uniquely Delicious Experience!

Liz, Son, Curt, Cody SENOR WONG RESTAURANT & BAR
112 E. 1st St. S
(651) 224-2019 • senorwong.com

Search for us on the Green Line directory available September 2012. • facebook.com/greentlineTC

41

Central Corridor Light Rail Transit



\$4 M Small Business Loan Program

- \$4 million available to small businesses (<\$2M sales/year)
 - Maximum amount \$20,000/business
 - Demonstrate revenue loss since construction start
 - One-fifth of loan forgiven for each year the business remains on the corridor
- Over 130 business loans totaling \$2.0 million have been approved since inception

42

Central Corridor Light Rail Transit



Business Census Data Changes Since March 2011

Out of over 1,400 businesses identified

Businesses	March 2011-July 2012	August 2012	Total
Opened on corridor	79	3	82
Closed on corridor	66	3	69
Moved w/in corridor	20	1	21
Moved off corridor	12	0	12

43

Central Corridor Light Rail Transit



More Information



Check out our website:

- www.centralcorridor.org

Contact Central Corridor Project Office:

- 540 Fairview Avenue North
St. Paul, MN 55104
- Construction Hotline: 651-602-1404
- Comment Line: 651-602-1645
- Email:
centralcorridor@metc.state.mn.us

