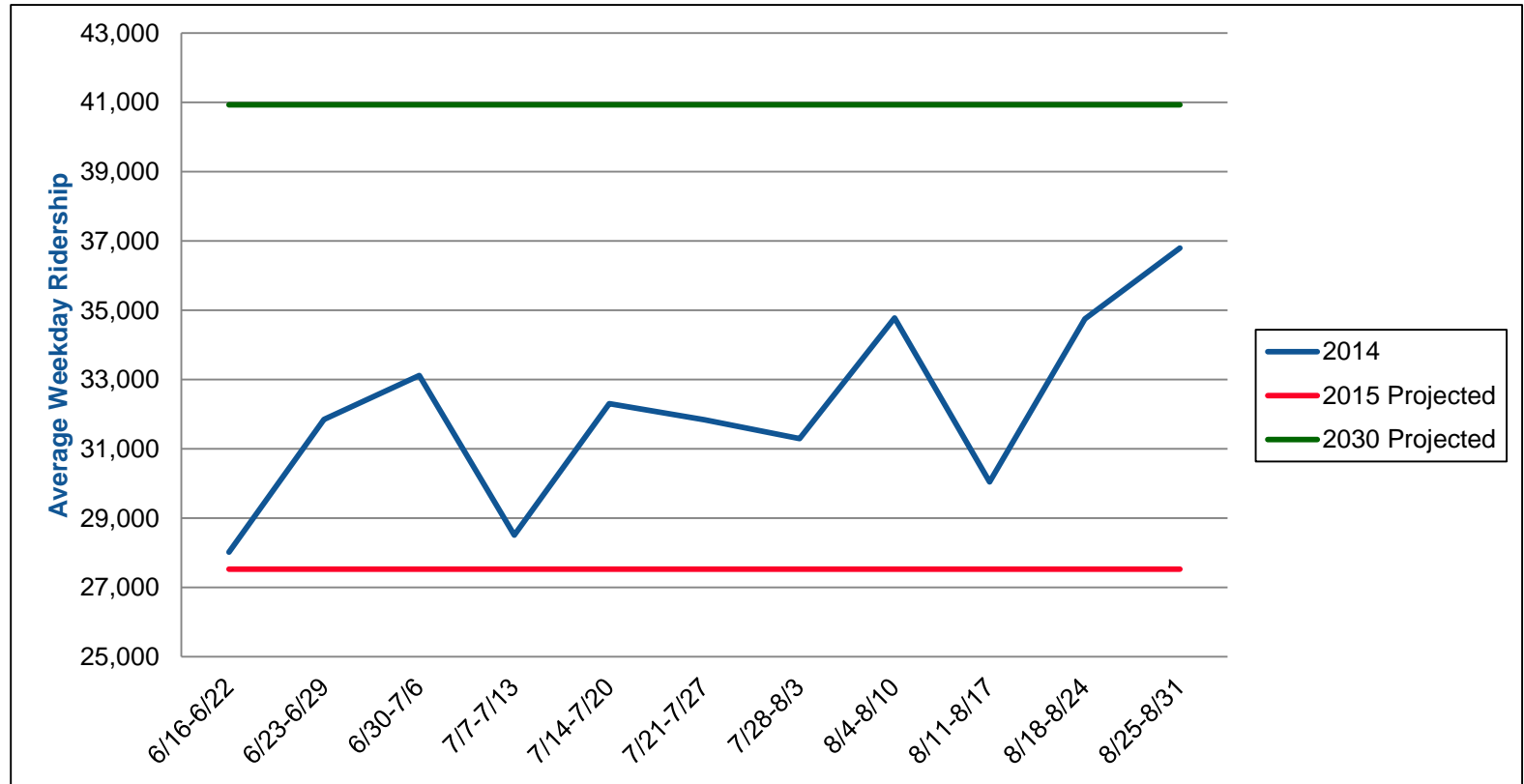


METRO Green Line Update



**Legislative Commission on
Metropolitan Government
Sept. 9, 2014**

Green Line Ridership



- **36,801 average weekday ridership Aug. 25-31 – 25% above 2015 projection**
- **2.4 million total rides through Aug. 29**
- **107,039 opening weekend rides**

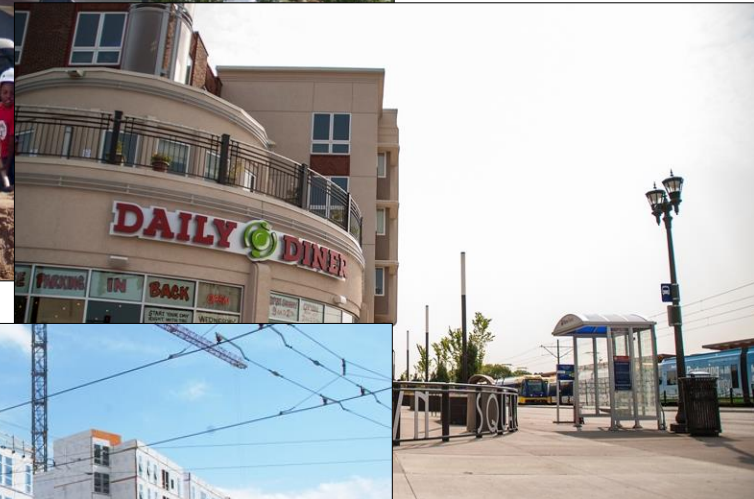
Green Line Ridership

- Coordinated outreach with 'Anchor Partners'
- U-Pass sales up 11.5 percent
- Avg. 10,513 fans to Vikings pre-season games – 20 percent of attendance

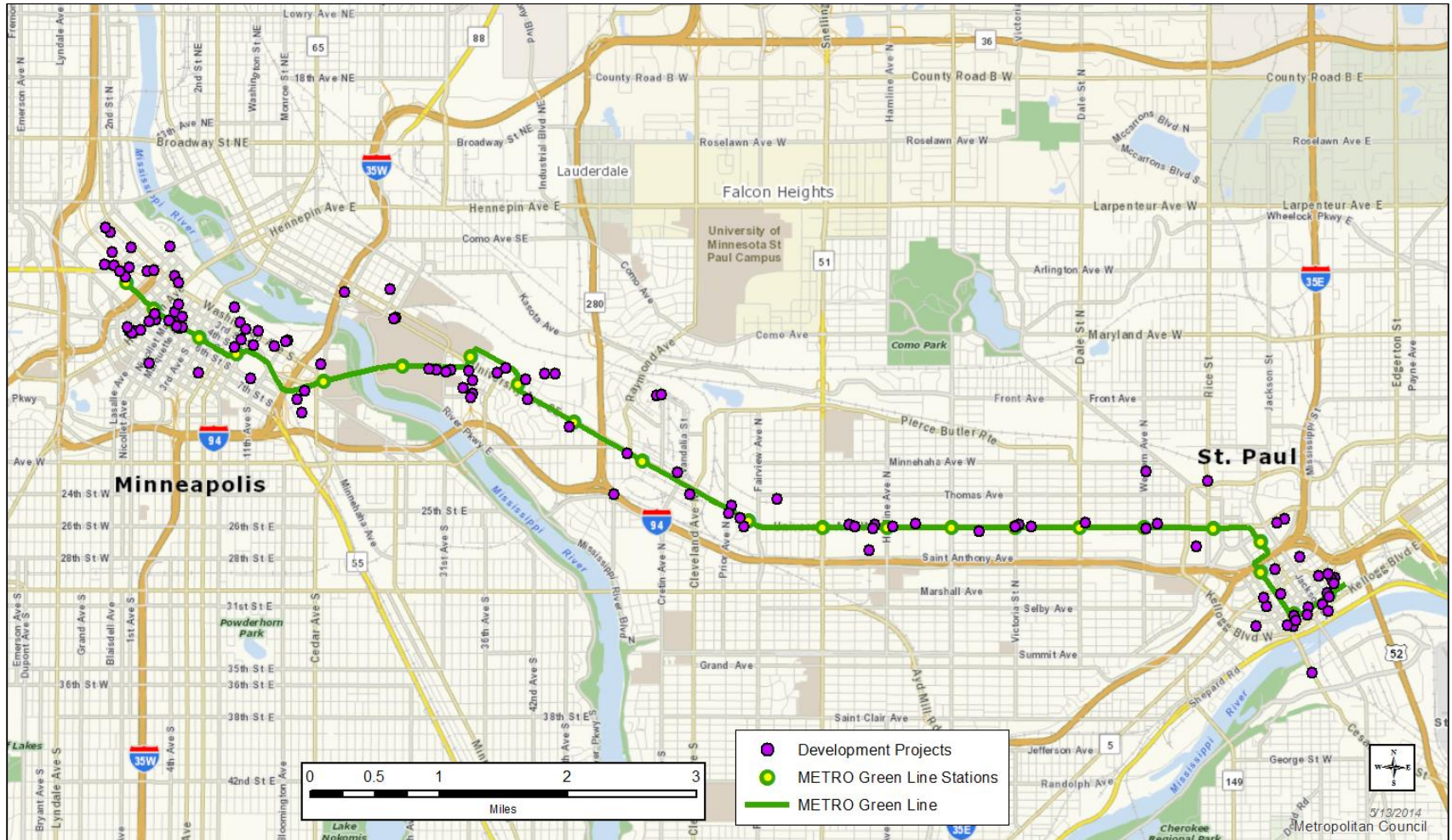


Green Line Economic Development

- \$2.7 billion in public and private development within half-mile of Green Line; 120+ projects
- \$33.9 million in Met Council TOD grants, supporting 49 projects since 2006
- 134 businesses opened on corridor March 2011 to June 2014



Green Line Economic Development



Green Line Safety

- New East Command in St. Paul
- 22 additional officers hired to focus on Green Line
- Extensive outreach prior to opening, immediately following and at beginning of the U of M's fall semester
- 10 vehicle collisions – primary cause illegal left turns; addressed through use of horns at intersections
- 4 pedestrian contacts – primary cause trespassing; one transported, one fatality



Green Line Travel Times

- 53 minutes average end-to-end travel time
- ‘Predictive priority’ gives trains larger window to get a green light
- Implemented at three low-volume intersections in August with positive results
- ‘Predictive priority’ to be implemented at additional low-volume intersections
- Average trip length on corridor is three miles

