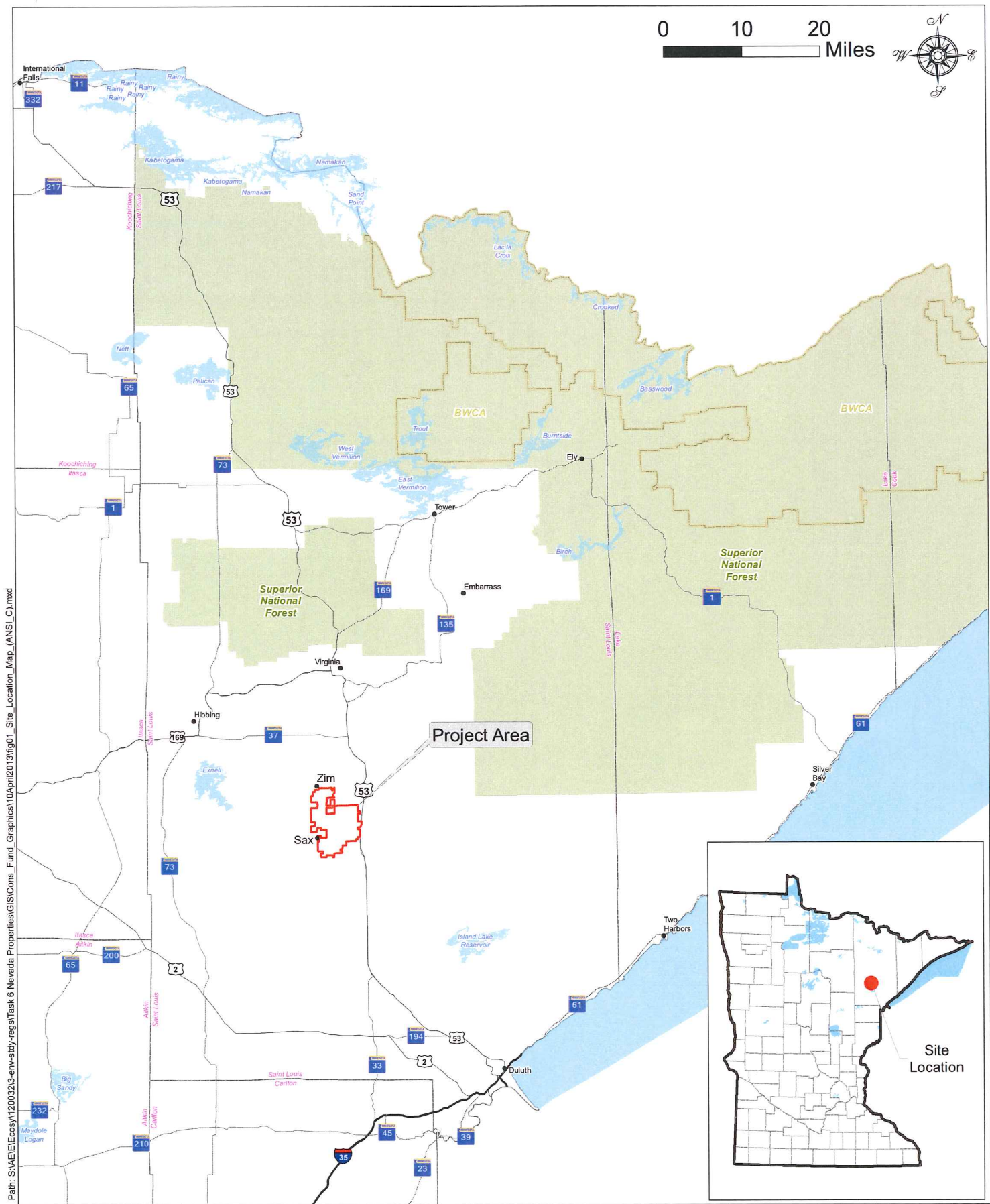
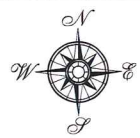


0 10 20 Miles



Path: S:\AE\IE\ecosy1\200323-env-stey-regis\Task 6 Nevada Properties\GIS\Cons_Fund_Graphics\10\April2013\fig01_Site_Location_Map_(ANSI_C).mxd



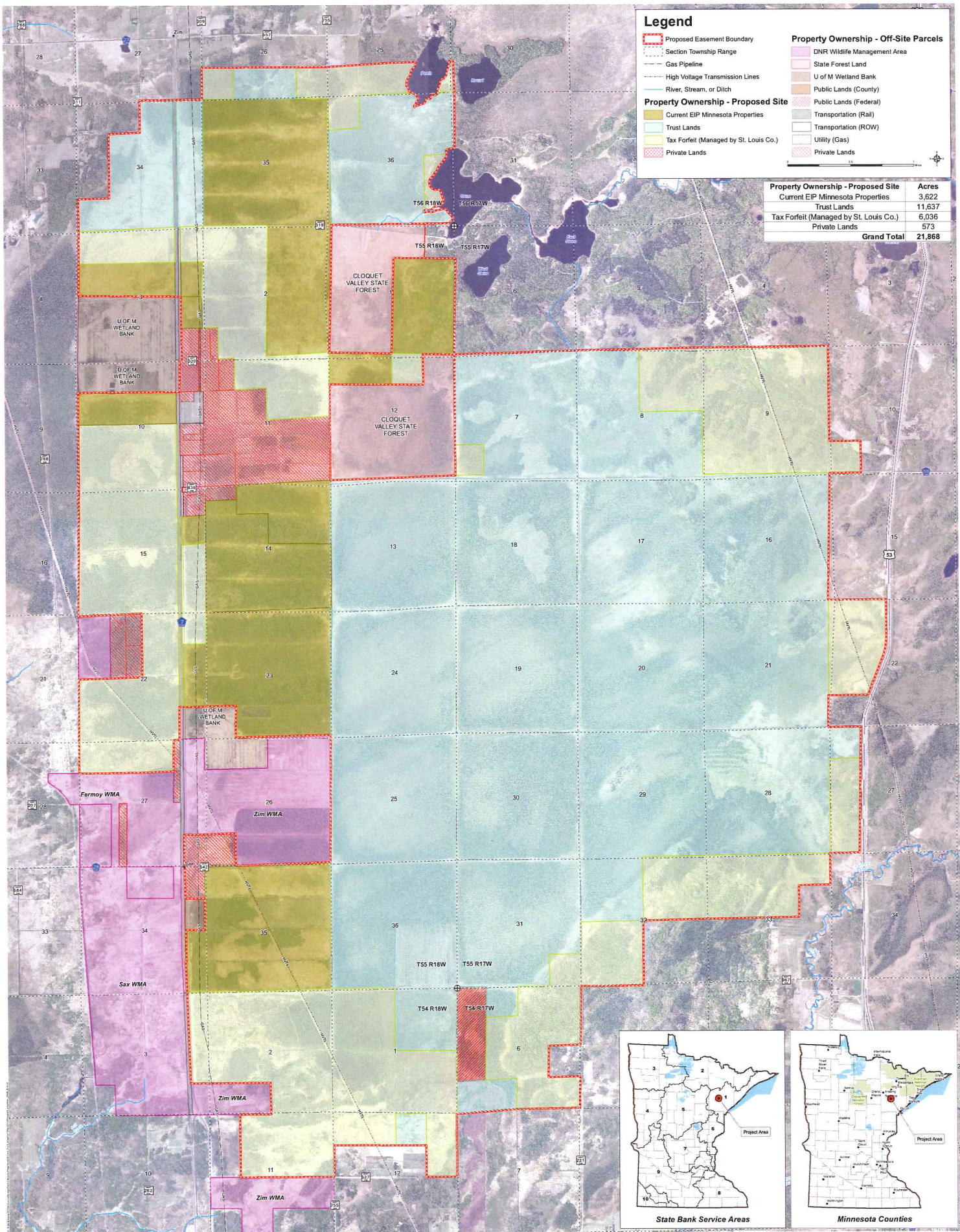
3535 VADNAIS CENTER DR.
ST. PAUL, MN 55110
PHONE: (651) 490-2000
FAX: (888) 908-8166
TF: (800) 325-2055
www.sehinc.com

Project: ECOSY 120032
Print Date: 4/10/2013
Map by: B. Tolcser
Projection: NAD83 UTM15N
Source: MnDNR, EcoSy

SITE LOCATION MAP

Figure 1

This file contains a copy of the map data and is not intended for distribution. This map is a compilation of maps, information, and data gathered from various sources. The map is not intended for use as a legal document. The map is not intended for use as a legal document. The map is not intended for use as a legal document.



Legend

- Proposed Easement Boundary
- Section Township Range
- Gas Pipeline
- High Voltage Transmission Lines
- River, Stream, or Ditch
- Current EIP Minnesota Properties
- Trust Lands
- Tax Forfeit (Managed by St. Louis Co.)
- Private Lands
- DNR Wildlife Management Area
- State Forest Land
- U of M Wetland Bank
- Public Lands (County)
- Public Lands (Federal)
- Transportation (Rail)
- Transportation (ROW)
- Utility (Gas)
- Private Lands

Property Ownership - Proposed Site	Acres
Current EIP Minnesota Properties	3,622
Trust Lands	11,637
Tax Forfeit (Managed by St. Louis Co.)	6,036
Private Lands	573
Grand Total	21,888

