



Metropolitan Council

Overview of Community Development and Environmental Services Divisions



September 27, 2023



Contents

Our impact	2
Agency structure and domains	4
Community Development	7
Environmental Services	19

Metropolitan Council

Our impact

Creating the foundation for a thriving region



No one community can do it alone

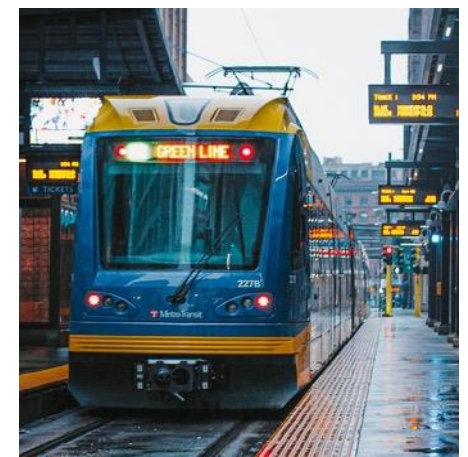
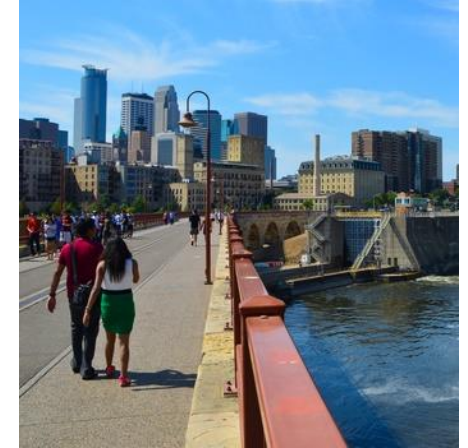
Every single person and community makes up the fabric and essence of this region.

3,189,756 people in 7 counties

- **3,120,266 people** in 141 cities
- **69,447 people** in 40 townships
- **430 residents** in Fort Snelling Unorganized Territory

Native people from 11 federally recognized Minnesota tribes and many other tribal communities

Growing diversity representing wide-ranging racial and ethnic people, with about 300 languages spoken at home



Agency structure and domains



Partnering on a shared vision

Making a strong system possible through planning, coordination, and operations



Long-range planning

Supporting cities and townships for the prosperity of the region



Environmental protection

Protecting public waterways and parklands to sustain our environment



Transportation services

Connecting people to places and keeping the economy moving

Metropolitan Council

Community Development

Environmental Services

Transportation

Housing, Development, and Contamination Clean Up Grants
MN 473.25-255

Regional Land Use Planning
MN 473.145, 473.851-867

Housing Services
MN 473.195

Regional Parks and Open Space planning and funding: MN 473.301-351

Wastewater
MN 473.511

Surface Water Quality
MN 473.157

Water Supply Planning
MN 473.1565

Regional Transportation Planning
MN 473.146

Transitway Development
MN 473.399

Transit Services
MN 473.385

Community Development



Community Development



Legislative Direction

- **Prepare Regional Development Guide**
(MN Statute 473.145)
- **Administer Land Planning Act**
(MN Statute 473.851)
- **Guide Regional Parks & Open Space System**
(MN Statute 473.301)
- **Implement Livable Communities Act**
(MN Statute 473.25)
- **Deliver Rental Assistance**
(MN Statute 473.195)
- **Conduct Research to Support Policy Making**
(MN Statute 473.242)

Metropolitan Land Planning Act

Legislative Purpose

- To **establish requirements** and procedures to accomplish comprehensive local planning with land use controls **consistent with planned, orderly and staged development and the metropolitan system plans**
- To **provide assistance** to local governmental units within the metropolitan area for the preparation of plans and official controls appropriate for their areas and consistent with metropolitan system plans.

Minn. Stat. 473.851 – 473.871

*Image courtesy of Metropolitan Design Center Image Bank
© Regents of the University of Minnesota. All rights reserved. Used with permission.*



Regional Planning Cycle

Plan Implementation (Ongoing)
 Communities formally adopt and begin to implement authorized local plans, amending as needed to adapt to changing local conditions.
Minn. Stats. 473.175, 473.206, & 473.858

2050 Local Comprehensive Plans (2025 – 2028)
 Cities, townships, and counties prepare comprehensive plans as required by state statute. Plans are informed by the regional development guide, system & policy plans, and system statements. The Council provides tools & resources to assist communities, and reviews and authorizes local plans.
Minn. Stats. 473.864, subd. 2; 473.854; 473.867



Decennial Census (2020)
 Census data is used to develop long-term forecasts at least once a decade for the regional development guide. Forecasts include future population, households, and employment for the region and each community in the region. Trends from authorized comprehensive plans inform the next regional development guide planning process.

2050 Regional Development Guide and System & Policy Plans (2022 – 2025)
 The regional development guide is the 30-year plan for the growth and development of our region. It reflects concerns and aspirations, anticipates future needs, and addresses our responsibility to future generations. It includes all of the plans of the Council for regional parks & trails, transportation & aviation, water resources, housing, and land use.
Minn. Stats. 473.145 and 473.146

System Statements Issued to Local Governments (2025)
 The system statement is a customized document informing each community in the region how it is affected by the Council's plans for regional systems.
Minn. Stat. 473.856

Council Roles in Regional Parks



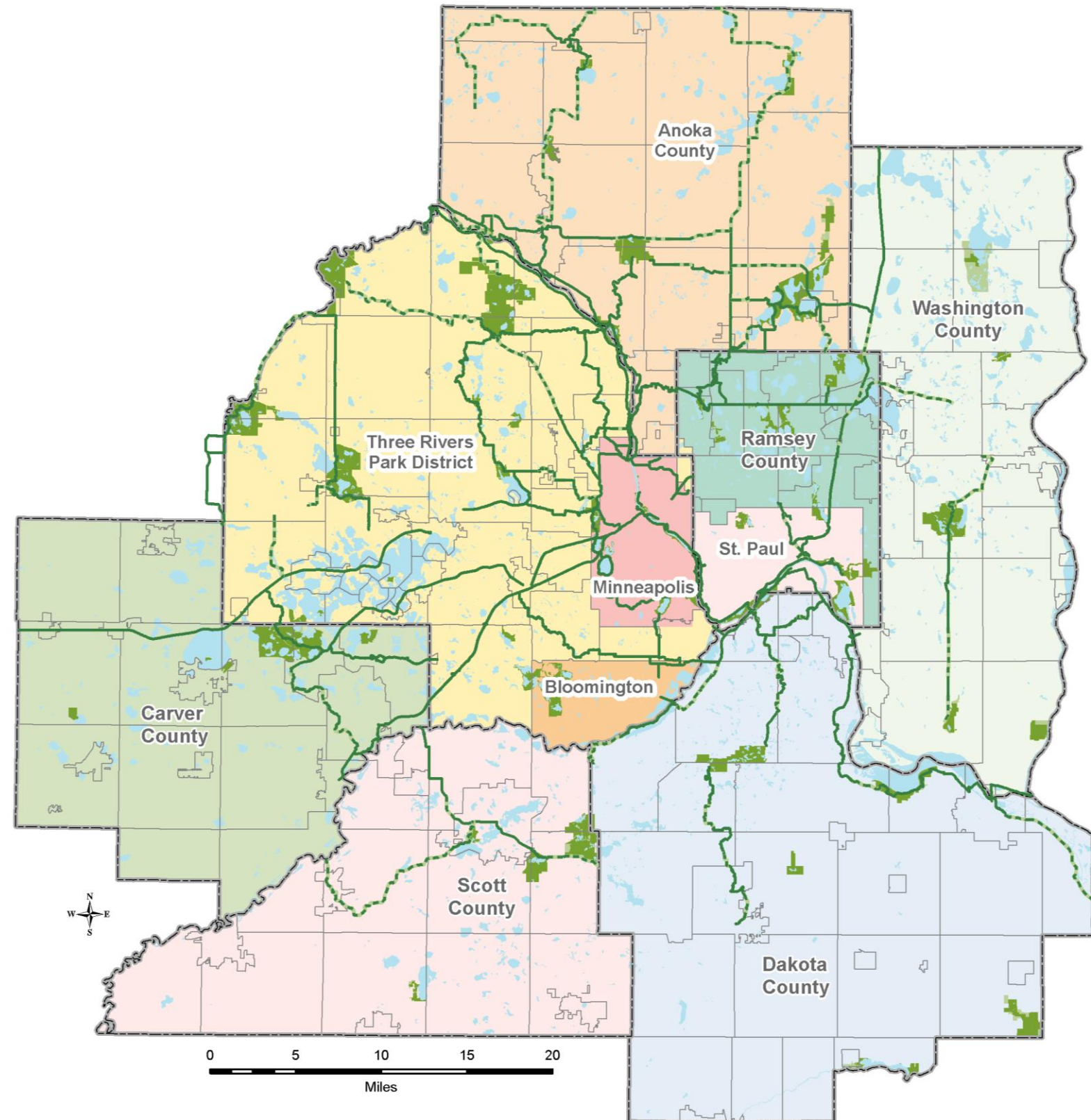
- Develop and implement the *Regional Parks Policy Plan*
- Identify and plan for the parks and trails components of the Regional Parks System
- Protect the integrity of the Regional Parks System
- Provide funding assistance and act as the fiscal agent for the Regional Parks System
- Review and approve master plans and amendments thereto for regional parks and trails components

Minn. Stats. 473.147, 473.301-473.351

Regional Park System and Implementing Agencies

- Anoka County
- Carver County
- Dakota County
- Ramsey County
- Scott County
- Washington County
- City of Bloomington
- Minneapolis Park & Recreation Board
- City of Saint Paul
- Three Rivers Park District

Minn. Stat. 473.351, subd. 1(a)





Regional Parks System includes:

- 44 Regional Parks
- 12 Park Reserves
- 8 Special Recreation Features
- Over 415 miles of regional trails currently open to the public
- 54,500 acres
- 69 million visits in 2022

Livable Communities Act

Purpose

- Interrelate development or redevelopment and transit
- Interrelate affordable housing and employment growth areas
- Intensify land use that leads to more compact development or redevelopment
- Achieve a mix of housing opportunities
- Encourage public infrastructure investments which connect urban neighborhoods and suburban communities, attract private sector redevelopment investment in commercial and residential properties adjacent to the public improvement, and provide project area residents with expanded opportunities for private sector employment.

Minn. Stat. 473.25



The Artery in Hopkins benefited from multiple LCA awards for the development of the public realm and housing projects along the corridor.

Livable Communities Act Programs

Program	<ul style="list-style-type: none">•Funding Source•Base Funding Available Annually
Livable Communities Demonstration Account	<ul style="list-style-type: none">•Council levy as defined in statute•\$13M in 2022 (grows annually)
Transit Oriented Development Account	<ul style="list-style-type: none">•Council levy, annually determined from above•~\$5M annually
Local Housing Incentives Account	<ul style="list-style-type: none">•Defined by statute•\$1M from general levy; \$500k from LCDA
Tax Base Revitalization Account	<ul style="list-style-type: none">•Fiscal Disparities Program carve-out•\$5M annually

- 4 grant programs funded by statutorily defined sources PLUS relinquishments and interest earnings
- Council passes through 100% of funds to about 76 participating communities
- Current portfolio is 110 grants valued at ~\$175M
- Roughly \$25M annually

Metropolitan Housing and Redevelopment Authority

Quick facts

- Created by Minnesota Legislature in 1974
 - To administer rent subsidy programs for low-income families.
- Serves ~7,200 low-income families with housing assistance
- Distributes roughly \$78 million in rent payments annually
- Largest administrator of the federal Housing Choice Voucher (“Section 8”) program in Minnesota

Minn. Stat. 473.195

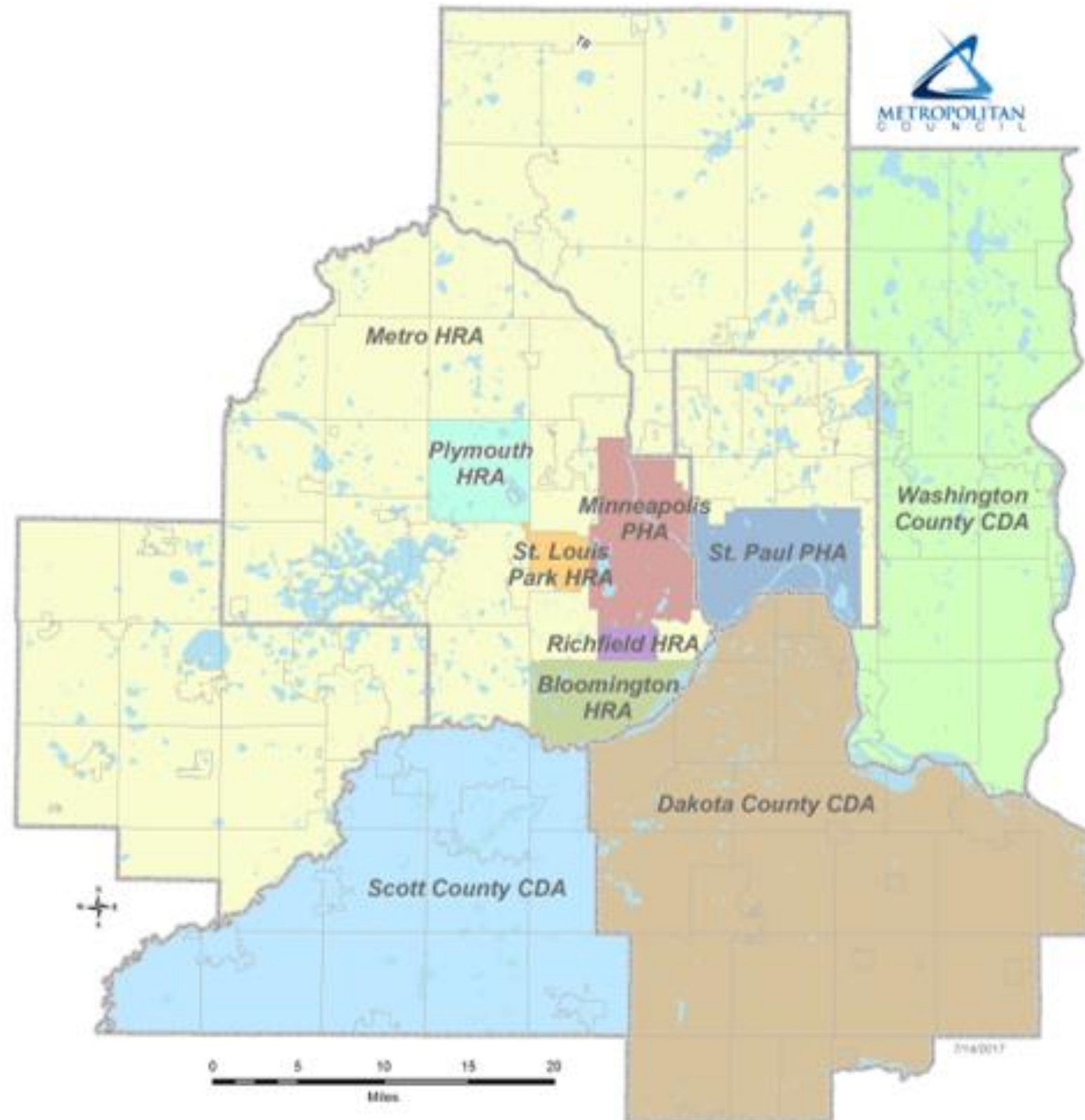


Metro HRA

- Anoka County
- Carver County
- Suburban Hennepin County
- Suburban Ramsey County
- 96 communities
- 1.3 million residents

*Some small specialized programs serve entire region

Minn. Stat. 473.195



Research & Analysis: Visualization and Distribution



What a difference a rate makes: population growth, housing production, and vacancy in the Twin Cities region since 2010

Introduction and key findings

Each year, the Council's research team estimates the population and households of each city and township in the Twin Cities region. We track housing units in detail, then use data from the U.S. Census Bureau's American Community Survey, the U.S. Postal Service, and our own surveys to estimate people living in housing units, and people living in group quarters (such as people living in residential care facilities). With this information, we arrive at an annual estimate of total population for cities and townships.



Our focus
How has the region's population changed since 2010?

Our findings
The region's population is nearing 3.1 million. The region has added almost 226,000 residents since 2010, an increase of 7.9%. There was notable population growth in Urban Center and Suburban Edge communities. In context, however, these gains are less impressive: the region's growth is slightly below our peer metros' average.

We have more people (and they need housing)
We estimate the Twin Cities region's total population was residents than the region had in 2010 (Figure 1). Two-thirds of that growth (births outpacing deaths), and the remaining third into the region than moved out of it, primarily from outside households added region-wide since 2010. Over the same period, taken together, it's clear that the region's overall household growth (7.4% versus 5.4%, respectively). As a result, about 20,000 housing units are needed to meet the region's vacancy rate.

So what does this growth mean for the Twin Cities region?

FIGURE 1. 2017 POPULATION

	Census April 1, 2010
Population	2,849,567
Households	1,117,749
Housing units	1,186,986

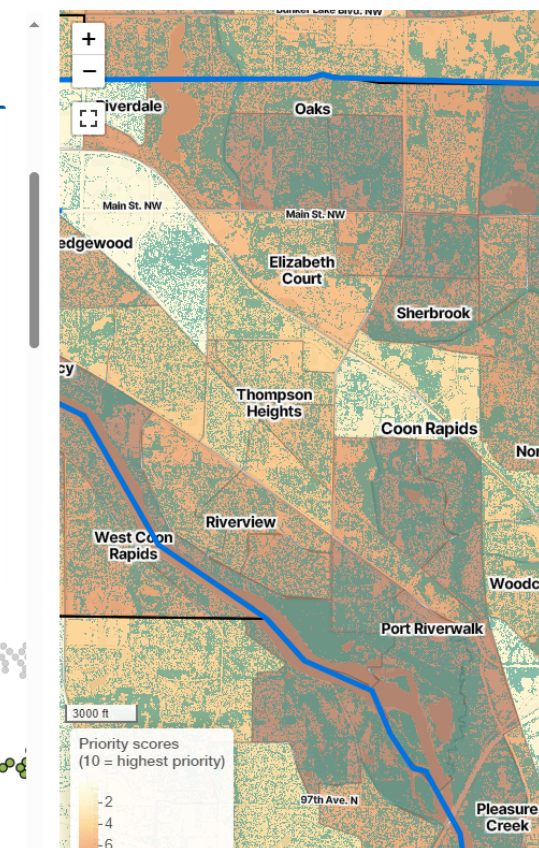
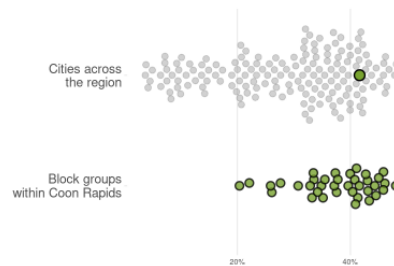
Source: Metropolitan Council's 2017 Population Estimate. The Council's 2017 Population Estimate is based on the U.S. Census Bureau's 2010 Census and the American Community Survey.

Growing Shade report for Coon Rapids

Tree canopy

Coon Rapids has an existing tree canopy coverage of 41.6% in 2021. Compared to other cities and townships across the region, the tree canopy in Coon Rapids is above average (27.8%). Within Coon Rapids, there are 50 Census block groups with tree canopy cover ranging from 20.4% to 56.4%.

The plot below shows how tree canopy cover in the selected area (shown in green) compares to other areas across the region. Within the selected area, tree canopy cover varies across census block groups. In most areas, a goal of 45% tree canopy coverage (as detected by our methods) is suitable.



- **Regional Data Dissemination & Reports**
 - Forecasts of population, households, and jobs
 - Population estimates annually
 - Construction, affordable housing, and land use
 - Parks usage
 - Rethinking Areas of Concentrated Poverty
- **Dashboards, Apps, Data Portals**
 - Community Profiles
 - Thrive Indicators
 - Climate Change, Growing Shade
 - Rent trends
 - Visualizing Regional Inequities
 - AND MORE!

Minn. Stats. 473.24, 473.242, and 473.351, subd. 3(1)

Environmental Services



Wastewater output

Averages 250 million gallons a day

In 1 day, could fill the Empire State Building



Wastewater system

Who

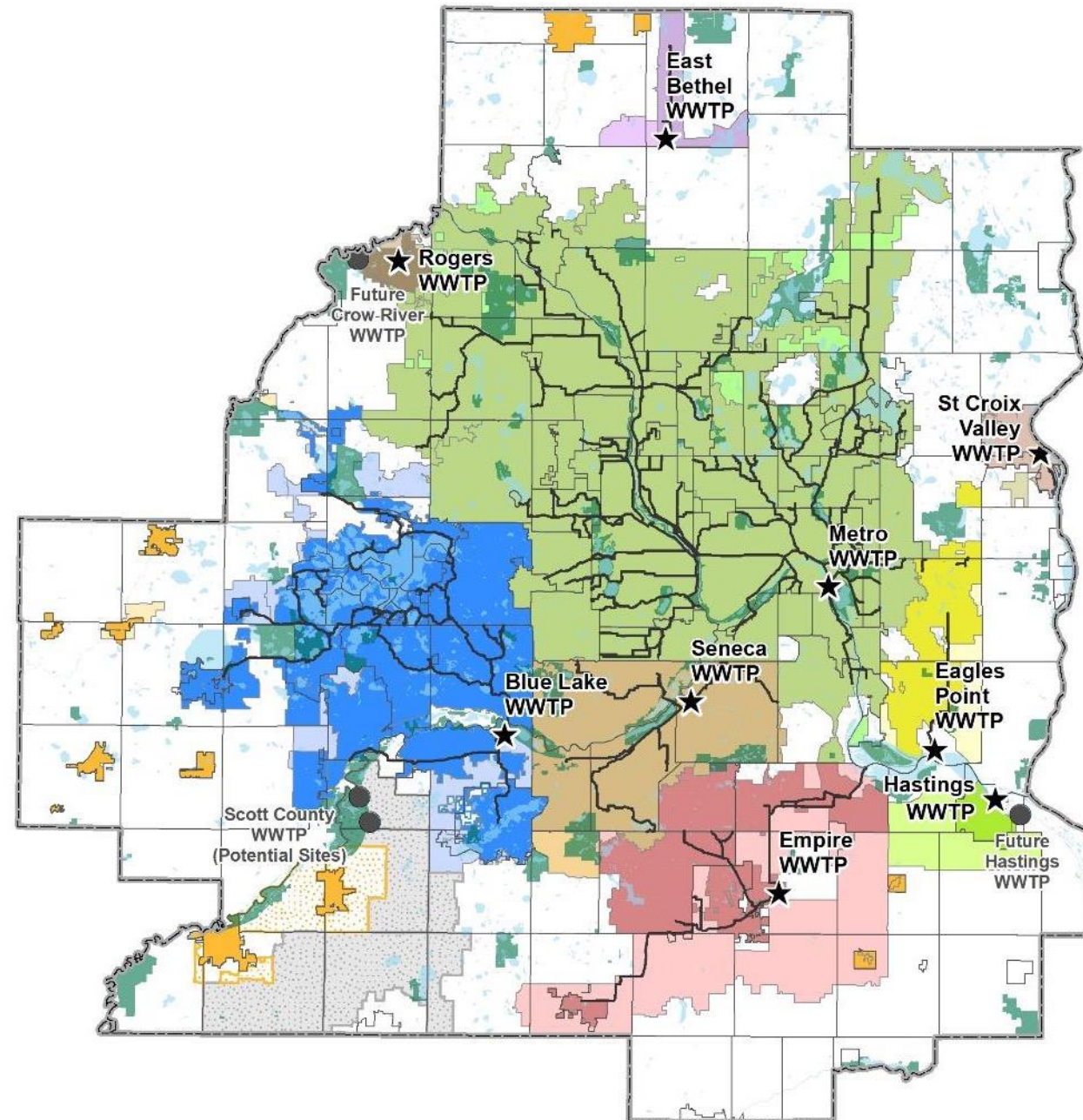
- 7-county Twin Cities Metro Area
- 111 communities
- 2,700,000+ people

Our facilities

- 9 wastewater treatment plants
- 60 pump or lift stations
- 637 miles of interceptors
- 250 million gallons per day (avg)

Our organization

- 600+ employees
- \$7 billion in valued assets
- \$150 million/year capital program



Sewage Mats on the Mississippi: June 1933



6-7-

Wildlife returns to the Mississippi River

Photo © Neil Rettig



Wintering Bald Eagles: 59 in the 1960's; currently 2,500

Environmental Services



Key roles

- Provide cost-effective and resilient regional wastewater collection and treatment and planning under Minn Stat. 474.504 and Section 208 Clean Water Act
- Support regional coordination and planning for watershed organizations, communities, and water suppliers under Minn. Stats. 473.145 and 103B
- Carry out regional water supply planning activities required under Minn. Stats. 473.1565 and 473.157

Statutory authority

1972 – Clean Water Act

1982 – Metropolitan Surface Water Management

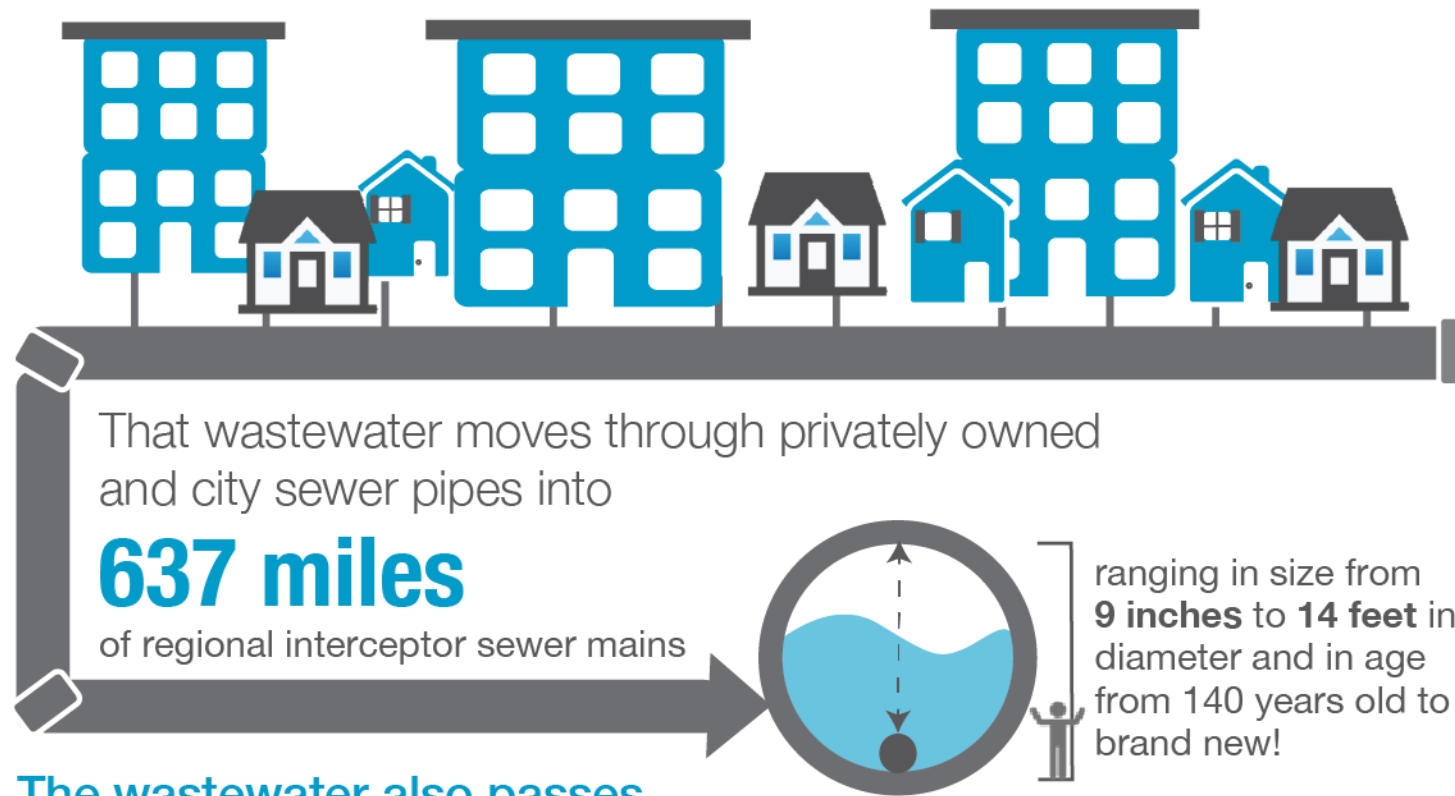
1995 – Metropolitan Land Planning Act

\$7 billion in assets

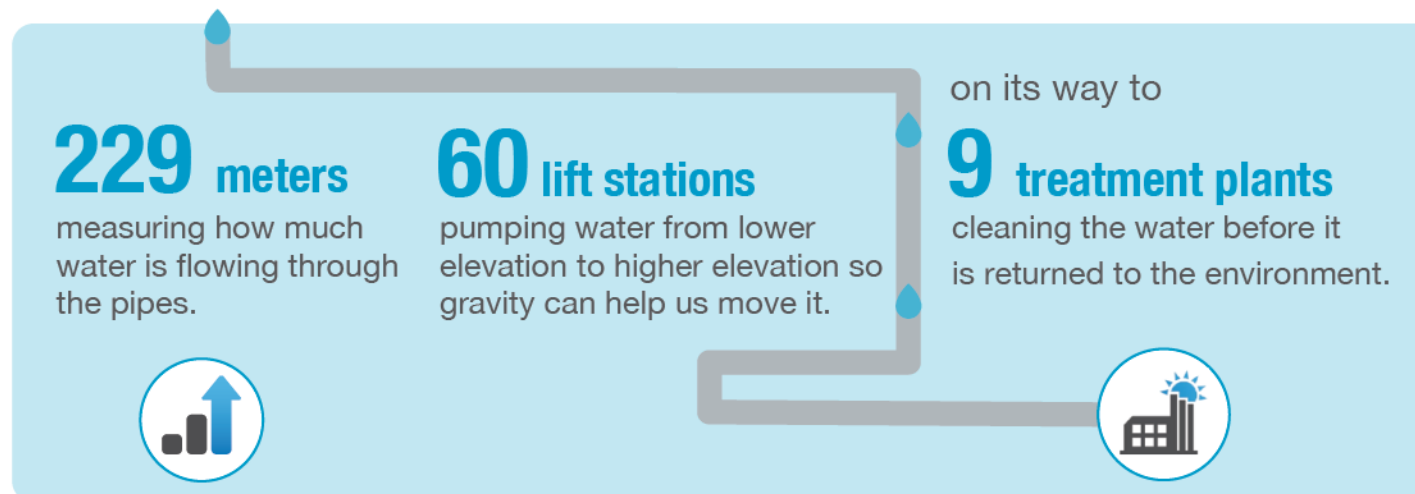
\$150 million / year capital program

moves and treats
250 million gallons
of wastewater each day

serving **2.7 million**
people in 111 communities in the
7-county Twin Cities metro region



The wastewater also passes



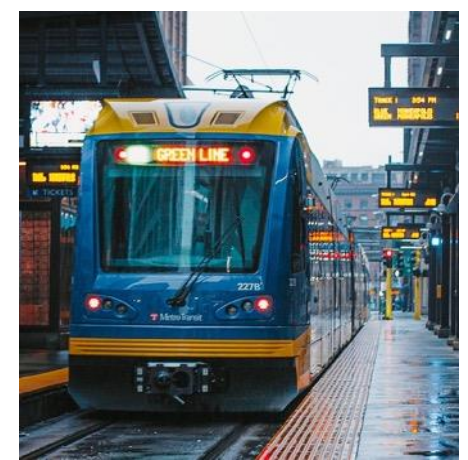
Water supply planning

Minnesota Statute 473.4565

- “Carry out planning activities addressing the water supply needs of the metropolitan area.”
- **Metro Area Water Supply Advisory Committee**
 - Counties
 - Municipalities/utilities
 - State agencies
 - Assists and guides Council water supply planning
 - Approves Master Water Supply Plan
 - Collaborates with a Technical Advisory Committee

The Metropolitan Council is not a water supplier.

The regional planning process has been designed and applied to ensure local water suppliers have control of and responsibility for their water supply systems.



Water supply



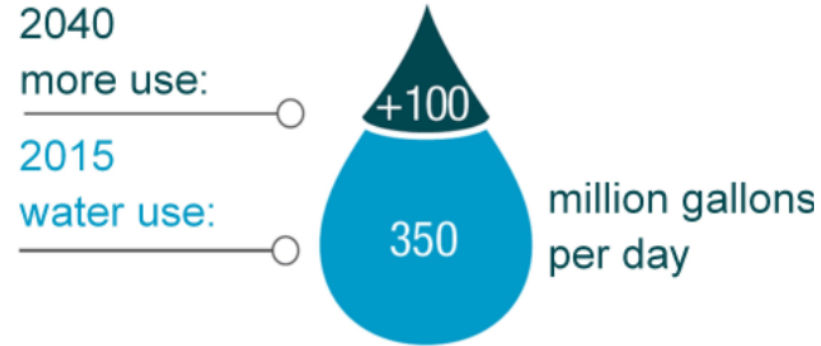
Role in regional water supply planning

- A regional water supply plan
- Support local government units making informed and effective decisions
- Assistance to communities in developing and implementing local plans
- Identify approaches for emerging issues, and
- Strong collaborative relationship with stakeholders.

Adequate water supplies are essential for our region's growth, livability and prosperity

Water supply challenges

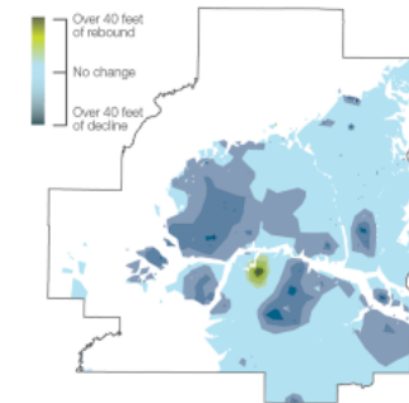
Projected Water



Projected 2040 Growth

500,000 more people
200,000 more households
200,000 more jobs

Metro Model projects aquifer decline from more pumping



environmental permits, registrations & potential contaminated sites

57,600

recorded in MPCA's
What's in My Neighborhood

Climate Challenges

drought
groundwater recharge
flooding



Emerging Issues

economic shifts
new contaminants
COVID-19 pandemic

The Met Council Convenes Partners

Sustainable water supply and water resources now and in the future

- All people have access to clean, safe, affordable water and wastewater services.
- All water and wastewater systems have sufficient funding to provide affordable services.
- All communities share in the economic, social, and environmental benefits of investment in water systems.



Maximize use of existing infrastructure



Offset demand with efficiency and conservation



Balance multiple water sources to meet demand



Align agency directions



Recognize uncertainty and minimize risk



Maintain groundwater levels

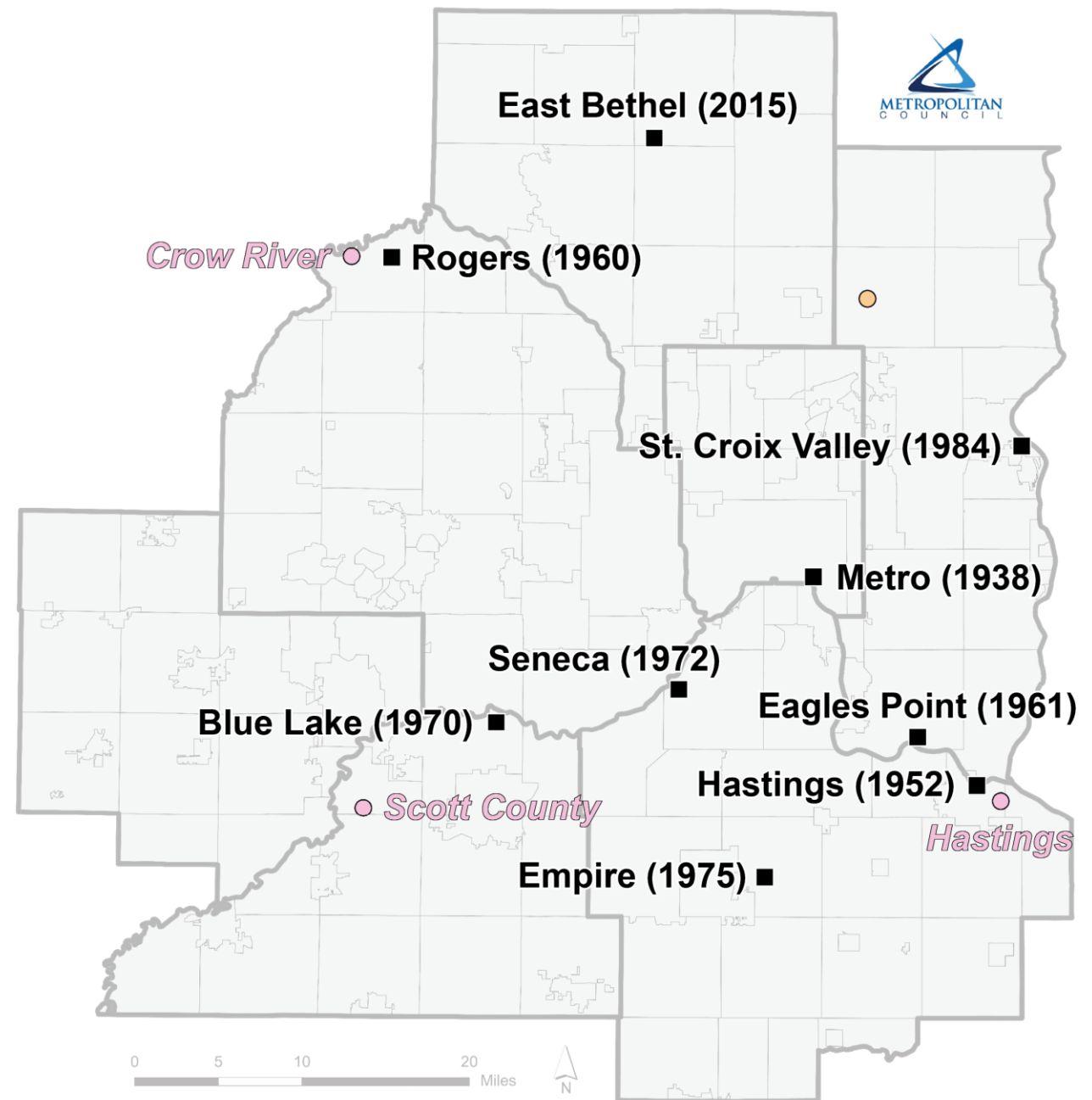
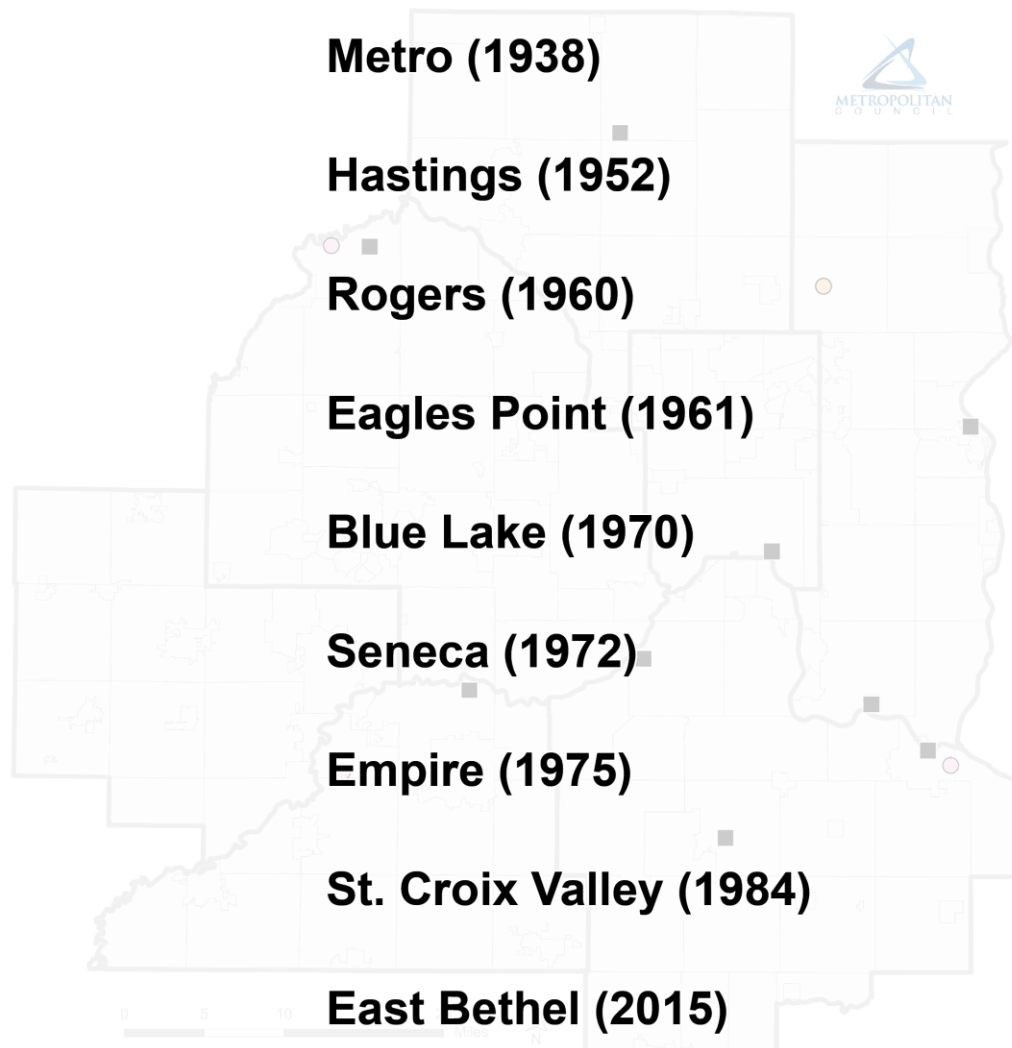


Prevent groundwater contamination spread



Protect surface water flows

Water Resource Recovery for 95 Years



- Water Resource Recovery Facility (year built)
- Planned Water Resource Recovery Facility
- Potential Water Resource Recovery Facility



LisaBeth Barajas

Executive Director, Community Development

Lisa.Barajas@metc.state.mn.us

Leisa Thompson

General Manager, Environmental Services

Leisa.Thompson@metc.state.mn.us

