

# Support limited liability for certified salt applicators

Jane Hovland & Barb Akre



Gretchen Sable

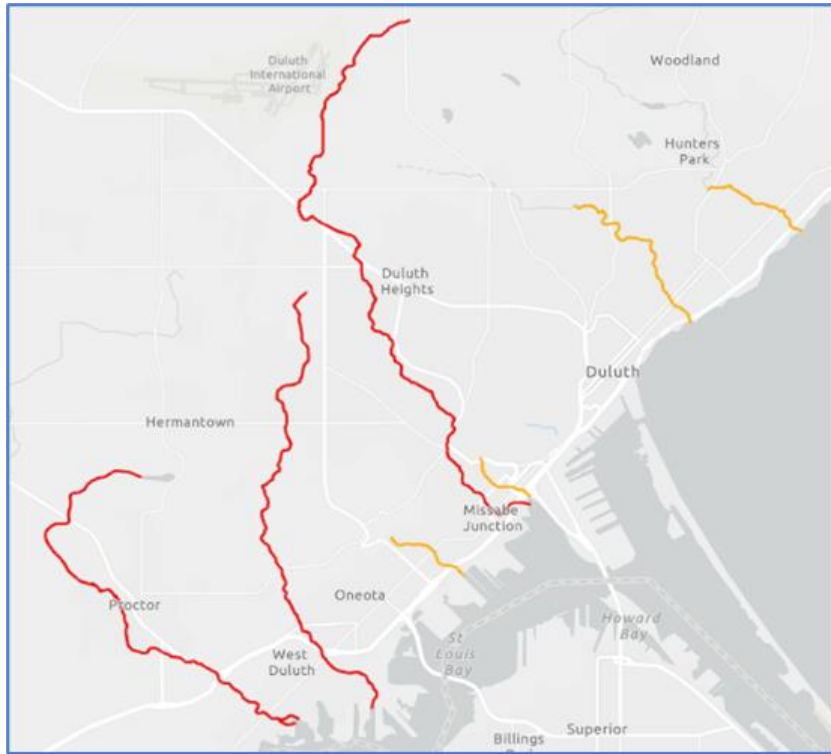


# Over application of deicing salt pollutes



- It accumulates in soil, surface water & groundwater
- There aren't economically feasible treatment options
- Ecosystems change: aquatic life is harmed and food chains are disrupted
- Infrastructure is damaged

# Duluth's freshwater is becoming salty



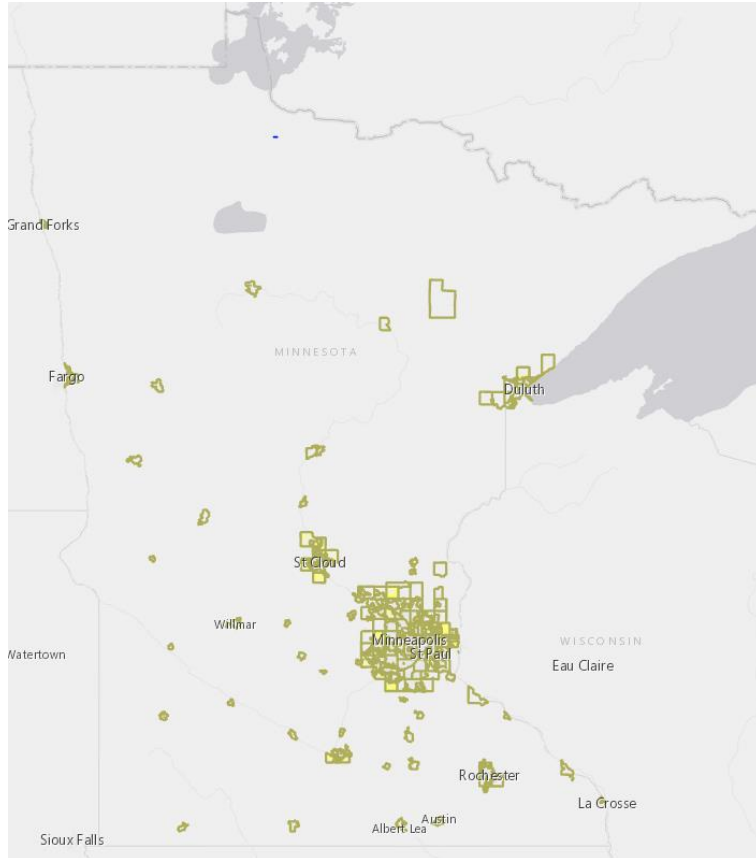
- Of 44 streams in Duluth, only 10 are monitored for chloride
  - 3 meet chloride standards
  - 3 exceed standards and are impaired
  - 4 streams “at risk” for impairment
    - 1 of those already nominated for impairment
- Clean water draws tourists to Duluth and the state (\$\$\$)

# MN has made a good start to reduce salt use



- Road authorities use calibration & brining practices
- MN Local Road Research Board experiments with salt alternatives
- MN Statewide Chloride Management Plan guidance
- MN Stormwater Manual guidance with BMPs
- Smart Salting training:
  - For road maintenance professionals
  - For parking lots and sidewalks professionals
  - For property managers, business owners, & environmental professionals

# MS4 permittees are improving practices



- Better products and methods
- Trained staff
- Calibration equipment



## *HOWEVER*

- Large parts of the state lack these requirements because their urbanized area population is <50,000

# Wise salt use advice exists for homeowners



## 1. Shovel

Clear walkways before snow turns to ice, and before you apply salt. The more snow you clear manually, the less salt you'll need.



## 2. Select

Salt doesn't melt ice if the pavement is below 15 degrees, so use sand for traction when it's too cold, or choose a different de-icer.



## 3. Scatter

Use salt only where it's critical. When you apply salt to pavement, leave plenty of space between granules. A 12-ounce coffee cup of salt is enough to cover 10 sidewalk squares or a 20-foot driveway.



## 4. Sweep

Clean up leftover salt, sand, and de-icer to save and reuse as needed.

*Protect our water!*

Source: [www.cleanwatermn.org](http://www.cleanwatermn.org)

# What's missing?

Commercial salt applicators and the people that hire them need:

- Smart salting training (*available, not fully utilized*)
- Contracts that don't pay by pound of salt used (*model contracts available, not fully utilized*)
- Limited liability protection from lawsuits for trained & certified applicators (*not available*)



# Answer: Mirror New Hampshire's Program



- Green SnowPro Program: trains & certifies professionals in salt reduction practices that prioritize public safety & mitigate salt use.
- Limited liability protection against damages arising from snow and ice conditions is granted under [RSA 508:22](#) to NHDES-certified commercial salt applicators and property owners or managers that hire them.
- Ten years of NH data and litigation experience demonstrate the program's effectiveness.

***MN NEEDS YOUR SUPPORT  
FOR A SIMILAR LIMITED LIABILITY BILL NEXT SESSION***





# Why support a limited liability bill?

Balances public safety and environmental protection



*and*



Efficiency of salting  
Environmental quality  
Documentation



Liability  
Costs

# The bigger picture

- Chloride is not just a problem in Duluth
  - 50 Impairments for chloride statewide
- Salty water is a growing problem along the Mississippi
  - Chloride increasing basin-wide (source: A 2023 Upper Mississippi River Basin Association Report)
    - Chloride concentrations in the Upper Mississippi increased by an average of 35% between 1989 and 2018
      - Road salting was identified as a chief cause

